

EM05 Hardware Design

LTE Standard Module Series

Rev. EM05_Hardware_Design_V1.2

Date: 2020-01-07

Status: Released



Our aim is to provide customers with timely and comprehensive service. For any assistance, please contact our company headquarters:

Quectel Wireless Solutions Co., Ltd.

Building 5, Shanghai Business Park Phase III (Area B), No.1016 Tianlin Road, Minhang District, Shanghai, China 200233

Tel: +86 21 5108 6236

Email: info@quectel.com

Or our local office. For more information, please visit:

<http://www.quectel.com/support/sales.htm>

For technical support, or to report documentation errors, please visit:

<http://www.quectel.com/support/technical.htm>

Or email to: support@quectel.com

GENERAL NOTES

QUECTEL OFFERS THE INFORMATION AS A SERVICE TO ITS CUSTOMERS. THE INFORMATION PROVIDED IS BASED UPON CUSTOMERS' REQUIREMENTS. QUECTEL MAKES EVERY EFFORT TO ENSURE THE QUALITY OF THE INFORMATION IT MAKES AVAILABLE. QUECTEL DOES NOT MAKE ANY WARRANTY AS TO THE INFORMATION CONTAINED HEREIN, AND DOES NOT ACCEPT ANY LIABILITY FOR ANY INJURY, LOSS OR DAMAGE OF ANY KIND INCURRED BY USE OF OR RELIANCE UPON THE INFORMATION. ALL INFORMATION SUPPLIED HEREIN IS SUBJECT TO CHANGE WITHOUT PRIOR NOTICE.

COPYRIGHT

THE INFORMATION CONTAINED HERE IS PROPRIETARY TECHNICAL INFORMATION OF QUECTEL WIRELESS SOLUTIONS CO., LTD. TRANSMITTING, REPRODUCTION, DISSEMINATION AND EDITING OF THIS DOCUMENT AS WELL AS UTILIZATION OF THE CONTENT ARE FORBIDDEN WITHOUT PERMISSION. OFFENDERS WILL BE HELD LIABLE FOR PAYMENT OF DAMAGES. ALL RIGHTS ARE RESERVED IN THE EVENT OF A PATENT GRANT OR REGISTRATION OF A UTILITY MODEL OR DESIGN.

Copyright © Quectel Wireless Solutions Co., Ltd. 2020. All rights reserved.

About the Document

History

| Revision | Date | Author | Description |
|----------|------------|--------------------------|---|
| 1.0 | 2017-09-22 | Yeoman CHEN/ Daryl DU | Initial |
| 1.1 | 2019-07-22 | Frank WANG/ Lorry XU | <ol style="list-style-type: none"> 1. Removed “*” of EM05-E. 2. Removed content related to emergency call. 3. Added B41 to LTE-TDD bands of EM05-E (Table 1). 4. Updated key features of EM05 (Table 2). 5. Updated the functional diagram (Figure 1). 6. Updated the reference circuit of power supply (Figure 6) and relative description of TVS (Chapter 3.5.1). 7. Updated DC characteristics of FUL_CARD_POWER_OFF# (Table 7). 8. Updated reference circuits of normally short-circuited (U)SIM card connector (Figure 16) and a 6-pin (U)SIM card connector (Figure 18), and relative description of (U)SIM circuit design (Chapter 3.8). 9. Updated reference circuit of USB interface (Figure 19) and relative description of USB interface design (Chapter 3.9). 10. Updated auxiliary mode timing (Figure 21) and relative description of PCM interface (Chapter 3.10). 11. Updated relative description of antenna connection of the module (Chapter 5). 12. Updated module operating frequencies in (Table 19). 13. Updated GNSS frequency (Table 20). |

| | | | |
|-----|------------|-------------------------|---|
| | | | <ul style="list-style-type: none"> 14. Updated antenna requirements (Table 21). 15. Added storage temperature range (Table 26). 16. Added EM05-E current consumption (Table 29). 17. Updated EM05-CE conducted RF output power (Table 30). 18. Added EM05-CML conducted RF output power (Table 31). 19. Added EM05-E conducted RF output power (Table 32). 20. Added EM05-E conducted RF receiving sensitivity (Table 35). |
| 1.2 | 2020-01-07 | Lorry XU/ Frank WANG | <ul style="list-style-type: none"> 1. Updated the description of (U)SIM interface (Chapter 3.8). 2. Updated antenna requirements (Table 21). 3. Updated the description of antenna connectors and mating plugs (Chapter 5.3.2). 4. Updated EM05-E current consumption (Table 29). |

Contents

| | |
|--|-----------|
| About the Document | 3 |
| Contents | 5 |
| Table Index | 7 |
| Figure Index | 8 |
| 1 Introduction | 9 |
| 1.1. Safety Information | 10 |
| 2 Product Concept | 11 |
| 2.1. General Description | 11 |
| 2.2. Key Features | 12 |
| 2.3. Functional Diagram | 14 |
| 3 Application Interfaces | 15 |
| 3.1. Pin Assignment | 16 |
| 3.2. Pin Description | 17 |
| 3.3. Operating Modes | 21 |
| 3.4. Power Saving | 22 |
| 3.4.1. Sleep Mode | 22 |
| 3.4.1.1. USB Application with USB Remote Wakeup Function | 22 |
| 3.4.1.2. USB Application with USB Suspend/Resume and WOWWAN# Functions | 22 |
| 3.4.2. Airplane Mode | 23 |
| 3.5. Power Supply | 24 |
| 3.5.1. Decrease Voltage Drop | 24 |
| 3.5.2. Reference Design for Power Supply | 25 |
| 3.5.3. Monitor the Power Supply | 26 |
| 3.6. Power on/off Scenarios | 26 |
| 3.6.1. Turn on the Module Using FUL_CARD_POWER_OFF# | 26 |
| 3.6.2. Turn off the Module | 28 |
| 3.6.2.1. Turn off the Module Using the FUL_CARD_POWER_OFF# Pin | 28 |
| 3.6.2.2. Turn off the Module Using AT Command | 28 |
| 3.7. Reset the Module | 29 |
| 3.8. (U)SIM Interface | 31 |
| 3.9. USB Interface | 34 |
| 3.10. PCM and I2C Interfaces | 35 |
| 3.11. Control and Indication Signals | 37 |
| 3.11.1. W_DISABLE1# Signal | 38 |
| 3.11.2. LED# Signal | 38 |
| 3.11.3. WOWWAN# Signal | 39 |
| 3.11.4. DPR Signal* | 40 |
| 3.12. Configuration Pins | 40 |
| 4 GNSS Receiver | 42 |

| | | |
|----------|--|-----------|
| 4.1. | General Description | 42 |
| 5 | Antenna Connection | 43 |
| 5.1. | Operating Frequency | 43 |
| 5.2. | GNSS Frequency..... | 44 |
| 5.3. | Antenna Installation | 44 |
| 5.3.1. | Antenna Requirements | 44 |
| 5.3.2. | Antenna Connectors and Mating Plugs | 45 |
| 6 | Electrical, Reliability and Radio Characteristics | 48 |
| 6.1. | Absolute Maximum Ratings | 48 |
| 6.2. | Power Supply Requirements | 48 |
| 6.3. | I/O Requirements..... | 49 |
| 6.4. | Operation and Storage Temperatures | 49 |
| 6.5. | Current Consumption | 50 |
| 6.6. | RF Output Power | 54 |
| 6.7. | RF Receiving Sensitivity | 55 |
| 6.8. | Electrostatics Discharge | 56 |
| 6.9. | Thermal Consideration | 57 |
| 7 | Mechanical Dimensions and Packaging | 59 |
| 7.1. | Mechanical Dimensions of the Module..... | 59 |
| 7.2. | Standard Dimensions of M.2 PCI Express | 60 |
| 7.3. | Design Effect Drawings of the Module | 61 |
| 7.4. | M.2 Connector | 62 |
| 7.5. | Packaging | 62 |
| 8 | Appendix References | 63 |

Table Index

| | |
|---|----|
| TABLE 1: FREQUENCY BANDS OF EM05 SERIES MODULE | 11 |
| TABLE 2: KEY FEATURES OF EM05 | 12 |
| TABLE 3: DEFINITION OF I/O PARAMETERS..... | 17 |
| TABLE 4: PIN DESCRIPTION | 17 |
| TABLE 5: OVERVIEW OF OPERATING MODES..... | 21 |
| TABLE 6: DEFINITION OF VCC AND GND PINS..... | 24 |
| TABLE 7: DESCRIPTION OF FUL_CARD_POWER_OFF# PIN | 26 |
| TABLE 8: PIN DESCRIPTION OF RESET#..... | 29 |
| TABLE 9: PIN DEFINITION OF (U)SIM INTERFACE | 31 |
| TABLE 10: PIN DEFINITION OF USB INTERFACE | 34 |
| TABLE 11: PIN DEFINITION OF PCM AND I2C INTERFACES | 36 |
| TABLE 12: PIN DEFINITION OF CONTROL AND INDICATION SIGNALS..... | 37 |
| TABLE 13: FUNCTION OF W_DISABLE1# | 38 |
| TABLE 14: RF STATUS INDICATIONS OF LED# SIGNAL..... | 39 |
| TABLE 15: STATE OF WOWWAN# SIGNAL | 39 |
| TABLE 16: FUNCTION OF DPR SIGNAL | 40 |
| TABLE 17: PIN DEFINITION OF CONFIGURATION PINS | 41 |
| TABLE 18: LIST OF CONFIGURATION PINS | 41 |
| TABLE 19: MODULE OPERATING FREQUENCIES..... | 43 |
| TABLE 20: GNSS FREQUENCY | 44 |
| TABLE 21: ANTENNA REQUIREMENTS..... | 44 |
| TABLE 22: MAJOR SPECIFICATIONS OF ANTENNA CONNECTORS | 46 |
| TABLE 23: ABSOLUTE MAXIMUM RATINGS | 48 |
| TABLE 24: POWER SUPPLY REQUIREMENTS..... | 48 |
| TABLE 25: I/O REQUIREMENTS..... | 49 |
| TABLE 26: OPERATION AND STORAGE TEMPERATURES | 49 |
| TABLE 27: CURRENT CONSUMPTION OF EM05-CE | 50 |
| TABLE 28: CURRENT CONSUMPTION OF EM05-CML | 51 |
| TABLE 29: CURRENT CONSUMPTION OF EM05-E..... | 52 |
| TABLE 30: CONDUCTED RF OUTPUT POWER OF EM05-CE | 54 |
| TABLE 31: CONDUCTED RF OUTPUT POWER OF EM05-CML..... | 54 |
| TABLE 32: CONDUCTED RF OUTPUT POWER OF EM05-E | 54 |
| TABLE 33: CONDUCTED RF RECEIVING SENSITIVITY OF EM05-CML | 55 |
| TABLE 34: CONDUCTED RF RECEIVING SENSITIVITY OF EM05-CE | 55 |
| TABLE 35: CONDUCTED RF RECEIVING SENSITIVITY OF EM05-E..... | 56 |
| TABLE 36: ESD CHARACTERISTICS OF EM05..... | 56 |
| TABLE 37: HEAT DISSIPATION PERFORMANCE | 58 |
| TABLE 38: RELATED DOCUMENTS..... | 63 |
| TABLE 39: TERMS AND ABBREVIATIONS | 63 |

Figure Index

| | |
|---|----|
| FIGURE 1: FUNCTIONAL DIAGRAM | 14 |
| FIGURE 2: PIN ASSIGNMENT | 16 |
| FIGURE 3: SLEEP MODE APPLICATION WITH USB REMOTE WAKEUP | 22 |
| FIGURE 4: SLEEP MODE APPLICATION WITH WOWWAN#..... | 23 |
| FIGURE 5: POWER SUPPLY LIMITS DURING BURST TRANSMISSION..... | 24 |
| FIGURE 6: REFERENCE CIRCUIT OF POWER SUPPLY | 25 |
| FIGURE 7: REFERENCE DESIGN OF POWER SUPPLY | 25 |
| FIGURE 8: TURN ON THE MODULE USING GPIO..... | 26 |
| FIGURE 9: TURN ON THE MODULE AUTOMATICALLY..... | 27 |
| FIGURE 10: TIMING OF TURNING ON MODULE | 27 |
| FIGURE 11: TIMING OF TURNING OFF THE MODULE THROUGH FUL_CARD_POWER_OFF#..... | 28 |
| FIGURE 12: TIMING OF TURNING OFF THE MODULE THROUGH AT COMMAND..... | 29 |
| FIGURE 13: REFERENCE CIRCUIT OF RESET# BY USING DRIVING CIRCUIT | 30 |
| FIGURE 14: REFERENCE CIRCUIT OF RESET# BY USING BUTTON | 30 |
| FIGURE 15: TIMING OF RESETTING MODULE | 30 |
| FIGURE 16: REFERENCE CIRCUIT OF (U)SIM INTERFACE WITH NORMALLY CLOSED (U)SIM CARD CONNECTOR..... | 32 |
| FIGURE 17: REFERENCE CIRCUIT OF (U)SIM INTERFACE WITH NORMALLY OPEN (U)SIM CARD CONNECTOR..... | 32 |
| FIGURE 18: REFERENCE CIRCUIT OF (U)SIM INTERFACE WITH A 6-PIN (U)SIM CARD CONNECTOR. | 33 |
| FIGURE 19: REFERENCE CIRCUIT OF USB INTERFACE | 34 |
| FIGURE 20: PRIMARY MODE TIMING | 35 |
| FIGURE 21: AUXILIARY MODE TIMING | 36 |
| FIGURE 22: REFERENCE CIRCUIT OF PCM APPLICATION WITH AUDIO CODEC | 37 |
| FIGURE 23: LED# SIGNAL REFERENCE CIRCUIT DIAGRAM | 38 |
| FIGURE 24: WOWWAN# BEHAVIOR..... | 39 |
| FIGURE 25: WOWWAN# SIGNAL REFERENCE CIRCUIT DIAGRAM | 40 |
| FIGURE 26: RF ANTENNA CONNECTORS..... | 43 |
| FIGURE 27: DIMENSIONS OF THE RECEPTACLES (UNIT: MM) | 45 |
| FIGURE 28: SPECIFICATIONS OF MATING PLUGS USING Ø0.81MM COAXIAL CABLES | 46 |
| FIGURE 29: CONNECTION BETWEEN THE RF CONNECTOR AND THE 0.81MM COAXIAL CABLE | 47 |
| FIGURE 30: CONNECTION BETWEEN RECEPTACLE AND MATING PLUG USING Ø1.13MM COAXIAL CABLE | 47 |
| FIGURE 31: THERMAL DISSIPATION AREA ON BOTTOM SIDE OF THE MODULE | 57 |
| FIGURE 32: MECHANICAL DIMENSIONS OF EM05 | 59 |
| FIGURE 33: STANDARD DIMENSIONS OF M.2 TYPE 3042-S3 | 60 |
| FIGURE 34: M.2 NOMENCLATURE | 60 |
| FIGURE 35: TOP VIEW OF THE MODULE | 61 |
| FIGURE 36: BOTTOM VIEW OF THE MODULE..... | 61 |

1 Introduction

This document defines EM05 module and describes its air interface and hardware interfaces which are connected with customers' applications.

This document can help customers to quickly understand the interface specifications, electrical and mechanical details, as well as other related information of EM05 module. To facilitate its application in different fields, reference design is also provided for customers' reference. Associated with application note and user guide, customers can use the module to design and set up mobile applications easily.

1.1. Safety Information

The following safety precautions must be observed during all phases of operation, such as usage, service or repair of any cellular terminal or mobile incorporating EM05 module. Manufacturers of the cellular terminal should send the following safety information to users and operating personnel, and incorporate these guidelines into all manuals supplied with the product. If not so, Quectel assumes no liability for customers' failure to comply with these precautions.



Full attention must be given to driving at all times in order to reduce the risk of an accident. Using a mobile while driving (even with a handsfree kit) causes distraction and can lead to an accident. Please comply with laws and regulations restricting the use of wireless devices while driving.



Switch off the cellular terminal or mobile before boarding an aircraft. The operation of wireless appliances in an aircraft is forbidden to prevent interference with communication systems. If the device offers an Airplane Mode, then it should be enabled prior to boarding an aircraft. Please consult the airline staff for more restrictions on the use of wireless devices on boarding the aircraft.



Wireless devices may cause interference on sensitive medical equipment, so please be aware of the restrictions on the use of wireless devices when in hospitals, clinics or other healthcare facilities.



The cellular terminal or mobile contains a transmitter and receiver. When it is ON, it receives and transmits radio frequency signals. RF interference can occur if it is used close to TV set, radio, computer or other electric equipment.



In locations with potentially explosive atmospheres, obey all posted signs to turn off wireless devices such as your phone or other cellular terminals. Areas with potentially explosive atmospheres include fuelling areas, below decks on boats, fuel or chemical transfer or storage facilities, areas where the air contains chemicals or particles such as grain, dust or metal powders, etc.

2 Product Concept

2.1. General Description

EM05 is a series of LTE/UMTS/HSPA+ wireless communication module with receive diversity. It provides data connectivity on LTE-FDD, LTE-TDD, DC-HSDPA, HSPA+, HSDPA, HSUPA, WCDMA and CDMA networks. It also provides optional GNSS functionality to meet customers' specific application demands. EM05 contains three variants: EM05-CE, EM05-CML and EM05-E. Customers can select a dedicated type based on the region or operator. The following table shows the frequency bands of EM05 series module.

Table 1: Frequency Bands of EM05 Series Module

| Modules | LTE Bands | WCDMA Bands | CDMA Band | Rx-diversity | GNSS (Optional) |
|-----------------|--|-------------|-----------|--------------|----------------------|
| EM05-CE | FDD: B1/B3/B5/B8 TDD: B38/B39/B40/B41 | B1/B8 | BC0 | Supported | GPS, GLONASS, |
| EM05-CML | TDD: B38/B39/B40/B41 | / | / | Supported | BeiDou (Compass), |
| EM05-E | FDD: B1/B3/B7/B8/B20/B28 TDD: B38/B41 | B1/B8 | / | Supported | Galileo, QZSS |

EM05 can be applied in the following fields:

- Rugged tablet PC and laptop computer
- Remote monitor system
- Handheld mobile device
- Wireless POS system
- Smart metering system
- Other wireless terminal devices

2.2. Key Features

The following table describes the detailed features of EM05.

Table 2: Key Features of EM05

| Feature | Details |
|----------------------------|---|
| Function Interface | PCI Express M.2 Standard Interface |
| Power Supply | Supply voltage: 3.135V~4.4V Typical supply voltage: 3.3V |
| Transmitting Power | <ul style="list-style-type: none"> ● Class 3 (24dBm+1/-3dB) for WCDMA bands ● Class 3 (23dBm±2dB) for LTE-FDD bands ● Class 3 (23dBm±2dB) for LTE-TDD bands ● Class 3 (24dBm+2/-1dB) for CDMA BC0 |
| LTE Features | Support up to non-CA Cat 4 Support 1.4/3/5/10/15/20MHz RF bandwidth Support MIMO in DL direction FDD: Max 150Mbps (DL), Max 50Mbps (UL) TDD: Max 130Mbps (DL), Max 30Mbps (UL) |
| UMTS Features | Support 3GPP R8 DC-HSDPA, HSPA+, HSDPA, HSUPA and WCDMA Support QPSK, 16-QAM and 64-QAM modulation DC-HSDPA: Max 42Mbps (DL) HSUPA: Max 5.76Mbps (UL) WCDMA: Max 384Kbps (DL), Max 384Kbps (UL) |
| CDMA2000 Features | Support 3GPP2 CDMA2000 1X Advanced, CDMA2000 1x EV-DO Rev.A EVDO: Max 3.1Mbps (DL), Max 1.8Mbps (UL) 1X Advanced: Max 307.2Kbps (DL), Max 307.2Kbps (UL) |
| Internet Protocol Features | Support Internet service protocols: TCP/UDP/PPP/FTP/HTTP/NTP/PING/QMI/NITZ/HTTPS/SMTP/MMS/FTPS/SMTPS/SSL/FILE/MQTT Support PAP (Password Authentication Protocol) and CHAP (Challenge Handshake Authentication Protocol) protocols which are usually used for PPP connection |
| SMS | Text and PDU mode Point-to-point MO and MT SMS cell broadcast SMS storage: ME by default |
| (U)SIM Interface | Support (U)SIM card: 1.8V, 3.0V |
| Audio Interface | Support one digital audio interface: PCM interface WCDMA: AMR/AMR-WB LTE: AMR/AMR-WB |

| | |
|--------------------------|--|
| | Support echo cancellation and noise suppression |
| PCM Interface | Support 16-bit linear data formats Support long frame synchronization and short frame synchronization Support master and slave mode, but must be the master in long frame synchronization |
| USB Interface | Compliant with USB 2.0 specification (slave only), the data transfer rate can reach up to 480Mbps Used for AT command communication, data transmission, firmware upgrade, software debugging and GNSS NMEA output Support USB drivers for Windows 7/8/8.1/10, Linux 2.6~6.4, Android 4.x/5.x/6.x/7.x/9.x |
| Antenna Interface | Main antenna, Rx-diversity antenna and GNSS antenna interfaces |
| Rx-diversity | Support LTE/WCDMA Rx-diversity |
| GNSS Features | Gen 8C Lite of Qualcomm Protocol: NMEA 0183 |
| AT Commands | Compliant with 3GPP TS 27.007, 27.005 and Quectel enhanced AT commands |
| Physical Characteristics | Size: (42±0.15)mm × (30±0.15)mm × (2.3+0.1/-0.2)mm Weight: approx. 6.0g |
| Temperature Range | Operation temperature range: -30°C to +70°C ¹⁾ Extended temperature range: -40°C to +85°C ²⁾ Storage temperature range: -40°C to +90°C |
| Firmware Upgrade | USB interface and DFOTA |
| RoHS | All hardware components are fully compliant with EU RoHS directive |

NOTES

- ¹⁾ Within operating temperature range, the module is 3GPP compliant.
- ²⁾ Within extended temperature range, the module remains the ability to establish and maintain a voice, SMS, data transmission, etc. There is no unrecoverable malfunction. There are also no effects on radio spectrum and no harm to radio network. Only one or more parameters like P_{out} might reduce in their value and exceed the specified tolerances. When the temperature returns to normal operating temperature levels, the module will meet 3GPP specifications again.

2.3. Functional Diagram

The following figure shows a block diagram of EM05.

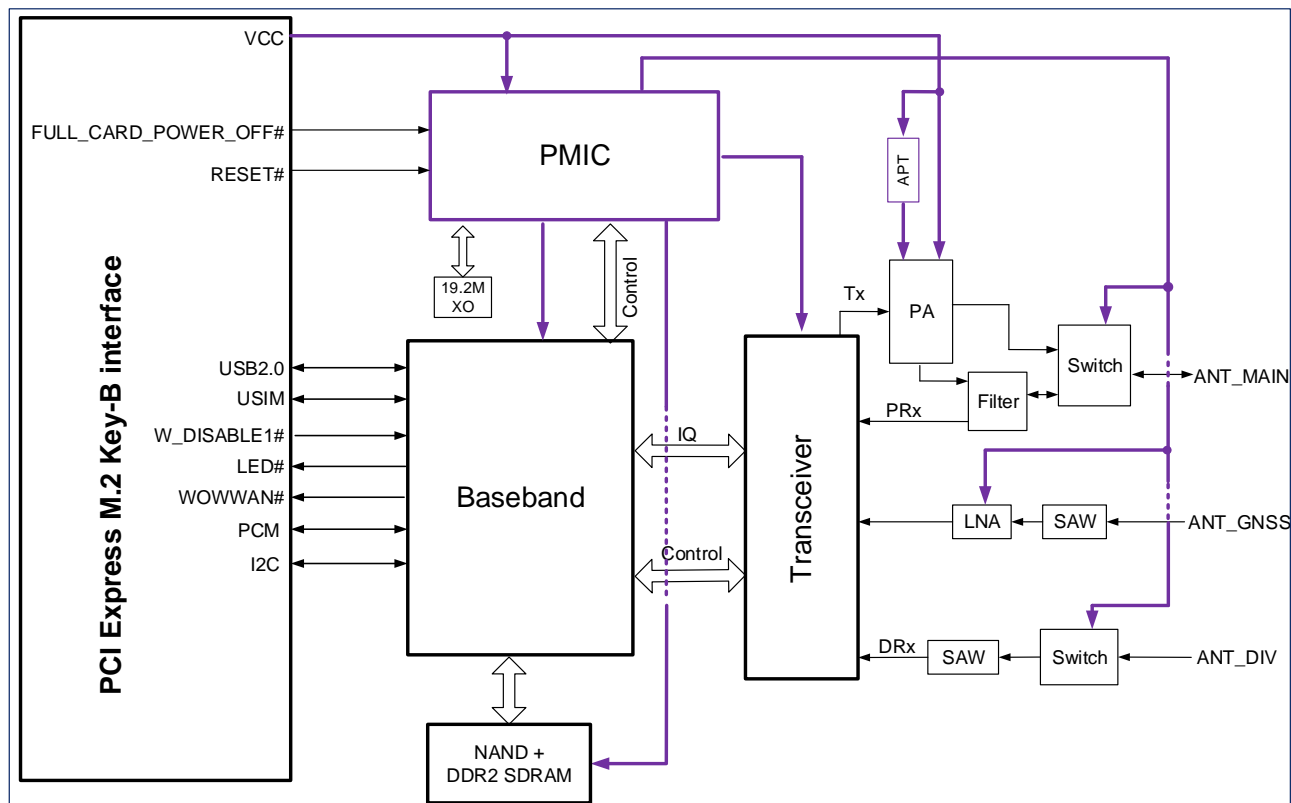


Figure 1: Functional Diagram

3 Application Interfaces

The physical connections and signal levels of EM05 comply with PCI Express M.2 specifications. This chapter mainly describes the definition and application of the following interfaces of EM05:

- Power supply
- (U)SIM interface
- USB interface
- PCM and I2C interfaces
- Control and indication signals
- Configuration pins

3.1. Pin Assignment

The following figure shows the pin assignment of EM05.

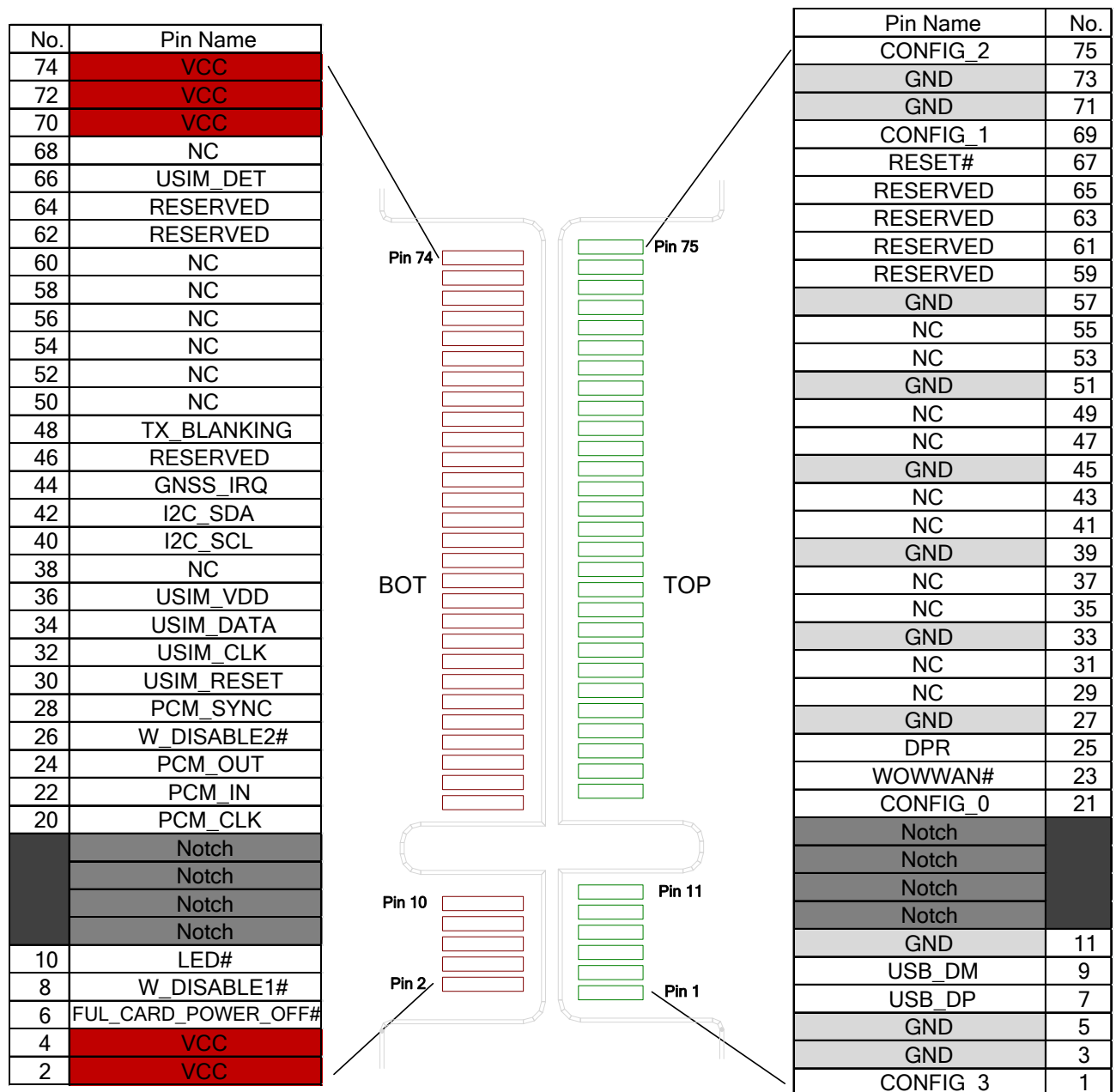


Figure 2: Pin Assignment

3.2. Pin Description

The following tables show the pin definition and description of EM05 on the 75-pin application.

Table 3: Definition of I/O Parameters

| Type | Description |
|------|----------------|
| DI | Digital Input |
| DO | Digital Output |
| IO | Bidirectional |
| OD | Open Drain |
| PI | Power Input |
| PO | Power Output |

Table 4: Pin Description

| Pin No. | M.2 Socket 2 SSIC Pinout | EM05 Pin Name | I/O | Description | Comment |
|---------|--------------------------|---------------------|-----|---|------------------------|
| 1 | CONFIG_3 | CONFIG_3 | | Connected to GND internally. EM05 is configured as WWAN-SSIC 0. | |
| 2 | 3.3V | VCC | PI | Power supply | 3.135V~4.4V |
| 3 | GND | GND | | Ground | |
| 4 | 3.3V | VCC | PI | Power supply | 3.135V~4.4V |
| 5 | GND | GND | | Ground | |
| 6 | FUL_CARD_POWER_OFF# | FUL_CARD_POWER_OFF# | DI | A signal control to power on/off the module. The module is powered off when it is at low level, while powered on when it is at high level. It is pulled to low level internally. It is 3.3V tolerant and can be driven by either 1.8V or 3.3V GPIO. | 1.8V/3.3V power domain |

| | | | | | |
|----|----------------------------|-------------|----|---|--|
| 7 | USB_D+ | USB_DP | IO | USB differential data bus (+) | |
| 8 | W_DISABLE1# | W_DISABLE1# | DI | Airplane mode control. Active low. | 1.8/3.3V power domain |
| 9 | USB_D- | USB_DM | IO | USB differential data bus (-) | |
| 10 | GPIO_9 | LED# | OD | An open drain and active low signal to indicate the RF status of the module. It requires a pull-up resistor on the host. | If unused, keep it open. |
| 11 | GND | GND | | Ground | |
| 12 | Key | Notch | | Notch | |
| 13 | Key | Notch | | Notch | |
| 14 | Key | Notch | | Notch | |
| 15 | Key | Notch | | Notch | |
| 16 | Key | Notch | | Notch | |
| 17 | Key | Notch | | Notch | |
| 18 | Key | Notch | | Notch | |
| 19 | Key | Notch | | Notch | |
| 20 | GPIO_5 (AUDIO_0) | PCM_CLK | IO | PCM clock. In master mode, it is an output signal. In slave mode, it is an input signal. | 1.8V power domain. If unused, keep it open. |
| 21 | CONFIG_0 | CONFIG_0 | | Unconnected internally. EM05 is configured as WWAN-SSIC 0. | |
| 22 | GPIO_6 (AUDIO_1) | PCM_IN | DI | PCM data input | 1.8V power domain |
| 23 | GPIO_11 (WAKE_ON_WWAN#) | WOWWAN# | OD | An open drain and active low signal to wake up the host. It requires a pull-up resistor on the host. | If unused, keep it open. |
| 24 | GPIO_7 (AUDIO_2) | PCM_OUT | DO | PCM data output | 1.8V power domain |
| 25 | DPR | DPR | DI | Body specific absorption rate (SAR) detection | 1.8V power domain |

| | | | | | |
|----|-------------------------|-------------|----|--|---------------------------------|
| 26 | GPIO_10 W_DISABLE2# | W_DISABLE2# | DI | GNSS disablement. Active low. | 1.8V power domain |
| 27 | GND | GND | | Ground | |
| 28 | GPIO_8- AUDIO_3 | PCM_SYNC | IO | PCM data frame synchronization signal | 1.8V power domain |
| 29 | SSIC-TxN | NC | | NC | |
| 30 | UIM-RESET | USIM_RESET | DO | Reset signal of (U)SIM card | 1.8V/3.0V power domain |
| 31 | SSIC-TxP | NC | | NC | |
| 32 | UIM-CLK | USIM_CLK | DO | Clock signal of (U)SIM card | 1.8V/3.0V power domain |
| 33 | GND | GND | | Ground | |
| 34 | UIM-DATA | USIM_DATA | IO | Data signal of (U)SIM card | 1.8V/3.0V power domain |
| 35 | SSIC-RxN | NC | | NC | |
| 36 | UIM-PWR | USIM_VDD | PO | Power supply for (U)SIM card | 1.8V/3.0V power domain |
| 37 | SSIC-RxP | NC | | NC | |
| 38 | N/C | NC | | NC | |
| 39 | GND | GND | | Ground | |
| 40 | GPIO_0 (GNSS_SCL) | I2C_SCL | DO | I2C serial clock. Used for external codec. | Pulled up to 1.8V internally |
| 41 | N/C | NC | | NC | |
| 42 | GPIO_1 (GNSS_SDA) | I2C_SDA | IO | I2C serial data. Used for external codec. | Pulled up to 1.8V internally |
| 43 | N/C | NC | | NC | |
| 44 | GPIO_2 (GNSS_IRQ) | GNSS_IRQ | DI | GNSS interrupt request | 1.8V power domain |
| 45 | GND | GND | | Ground | |
| 46 | GPIO_3 (SYSCLK) | RESERVED | | Reserved | |
| 47 | N/C | NC | | NC | |
| 48 | GPIO_4 (TX_BLANKING) | TX_BLANKING | DO | Transmit blanking signal for external GNSS module | 1.8V power domain |

| | | | | | |
|----|----------------|----------|----------|---|-------------------|
| 49 | N/C | NC | NC | | |
| 50 | N/C | NC | NC | | |
| 51 | GND | GND | Ground | | |
| 52 | N/C | NC | NC | | |
| 53 | N/C | NC | NC | | |
| 54 | N/C | NC | NC | | |
| 55 | N/C | NC | NC | | |
| 56 | N/C | NC | NC | | |
| 57 | GND | GND | Ground | | |
| 58 | N/C | NC | NC | | |
| 59 | ANTCTL0 | RESERVED | Reserved | | |
| 60 | COEX3 | NC | NC | | |
| 61 | ANTCTL1 | RESERVED | Reserved | | |
| 62 | COEX2 | RESERVED | Reserved | | |
| 63 | ANTCTL2 | RESERVED | Reserved | | |
| 64 | COEX1 | RESERVED | Reserved | | |
| 65 | ANTCTL3 | RESERVED | Reserved | | |
| 66 | SIM_DETECT | USIM_DET | DI | (U)SIM card insertion detection | 1.8V power domain |
| 67 | RESET# | RESET# | DI | Reset the module. Active low. | 1.8V power domain |
| 68 | SUSCLK (32kHz) | NC | NC | | |
| 69 | CONFIG_1 | CONFIG_1 | | Connected to GND internally. EM05 is configured as WWAN-SSIC 0. | |
| 70 | 3.3V | VCC | PI | Power supply | 3.135V~4.4V |
| 71 | GND | GND | | Ground | |
| 72 | 3.3V | VCC | PI | Power supply | 3.135V~4.4V |

| | | | |
|----|----------|----------|---|
| 73 | GND | GND | Ground |
| 74 | 3.3V | VCC | PI Power supply 3.135V~4.4V |
| 75 | CONFIG_2 | CONFIG_2 | Connected to GND internally. EM05 is configured as WWAN-SSIC 0. |

NOTES

1. The typical supply voltage of VCC is 3.3V.
2. EM05-CML does not support I2C interface.
3. Please keep all NC, reserved and unused pins open.

3.3. Operating Modes

The table below briefly summarizes the various operating modes referred in the following chapters.

Table 5: Overview of Operating Modes

| Mode | Details |
|----------------------------|--|
| Normal Operation | Idle Software is active. The module has registered to the network, and it is ready to send and receive data. |
| | Talk/Data Network connection is ongoing. In this mode, the power consumption is decided by network setting and data transfer rate. |
| Minimum Functionality Mode | AT+CFUN command can set the module to a minimum functionality mode without removing the power supply. In this case, both RF function and (U)SIM card will be invalid. |
| Airplane Mode | AT+CFUN command or W_DISABLE1# pin can set the module into airplane mode. In this case, RF function will be invalid. |
| Sleep Mode | In this mode, the current consumption of the module will be reduced to the minimal level. During this mode, the module can still receive paging message, SMS, voice call and TCP/UDP data from the network normally. |
| Power Down Mode | In this mode, the power management unit shuts down the power supply. Software is not active. Operating voltage (connected to VCC) remains applied. |

3.4. Power Saving

3.4.1. Sleep Mode

EM05 is able to reduce its current consumption to a minimum value during sleep mode. The following section describes the power saving procedure of EM05 module.

3.4.1.1. USB Application with USB Remote Wakeup Function

If the host supports USB Suspend/Resume and remote wake-up function, the following two preconditions must be met to let the module enter sleep mode.

- Execute **AT+QSCLK=1** to enable sleep mode.
- The host's USB bus, which is connected with the module's USB interface, enters Suspend state.

The following figure shows the connection between the module and the host.

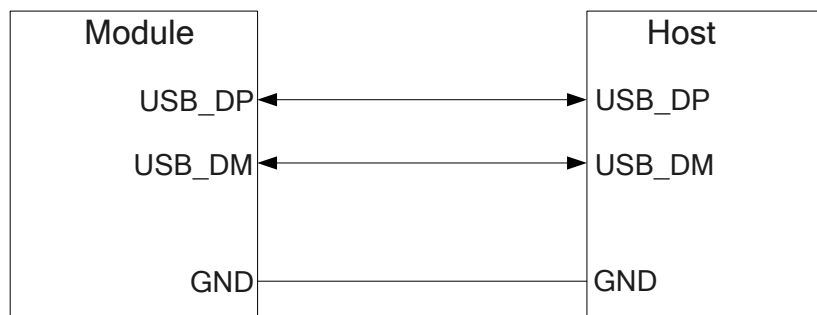


Figure 3: Sleep Mode Application with USB Remote Wakeup

- Sending data to EM05 via USB will wake up the module.
- When EM05 has a URC to report, the module will send remote wake-up signals via USB bus so as to wake up the host.

3.4.1.2. USB Application with USB Suspend/Resume and WOWWAN# Functions

If the host supports USB Suspend/Resume but does not support remote wake-up function, the WOWWAN# signal is needed to wake up the host.

There are two preconditions to let the module enter Sleep mode.

- Execute **AT+QSClk=1** to enable Sleep mode.
- The host's USB bus, which is connected with the module's USB interface, enters Suspend state.

The following figure shows the connection between the module and the host.

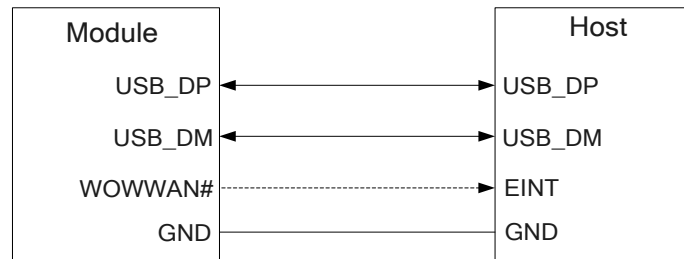


Figure 4: Sleep Mode Application with WOWWAN#

- Sending data to EM05 via USB will wake up the module.
- When EM05 has a URC to report, WOWWAN# signal will wake up the host.

3.4.2. Airplane Mode

When the module enters airplane mode, RF function does not work, and all AT commands correlative with RF function will be inaccessible. This mode can be set via the following ways.

Hardware:

The W_DISABLE1# pin is pulled up by default; driving it to low level will let the module enter airplane mode.

Software:

AT+CFUN command provides the following choices of the functionality level.

- **AT+CFUN=0**: Minimum functionality mode; both (U)SIM and RF functions are disabled.
- **AT+CFUN=1**: Full functionality mode (by default).
- **AT+CFUN=4**: Airplane mode. RF function is disabled.

For details of related AT commands, please refer to **document [2]**.

NOTES

1. The W_DISABLE1# control function is disabled in firmware by default. It can be enabled by **AT+QCFG="airplanecontrol"**.
2. Execution of **AT+CFUN** will not affect GNSS function.

3.5. Power Supply

The following table shows pin definition of VCC and GND pins.

Table 6: Definition of VCC and GND Pins

| Pin Name | Pin No. | I/O | Power Domain | Description |
|----------|---|-----|--------------|----------------|
| VCC | 2, 4, 70, 72, 74 | PI | 3.135V~4.4V | 3.3V DC supply |
| GND | 3, 5, 11, 27, 33, 39, 45, 51, 57, 71, 73 | | | Ground |

3.5.1. Decrease Voltage Drop

The power supply range of the module is from 3.135V to 4.4V. Please make sure that the input voltage will never drop below 3.135V. The following figure shows the voltage drop during burst transmission in 3G and 4G networks.

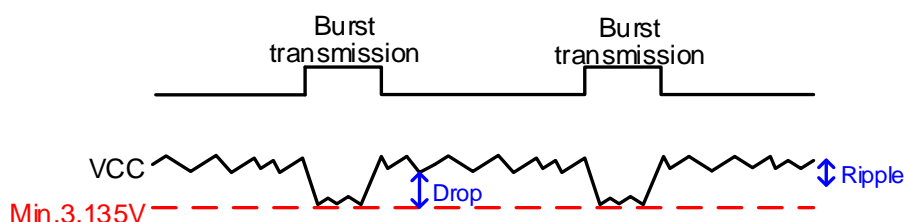


Figure 5: Power Supply Limits During Burst Transmission

To decrease voltage drop, a bypass capacitor of about 220μF with low ESR (ESR=0.7Ω) should be used, and a multi-layer ceramic chip capacitor (MLCC) array should also be reserved due to its ultra-low ESR. It is recommended to use three ceramic capacitors (100nF, 33pF, 10pF) for composing the MLCC array, and place these capacitors close to VCC pins. The main power supply from an external application has to be a single voltage source. The width of VCC trace should be no less than 2mm. In principle, the longer the VCC trace is, the wider it will be.

In addition, in order to avoid the damage caused by electric surge and ESD, it is suggested that a TVS diode with suggested low reverse stand-off voltage V_{RWM} 4.7V, low clamping voltage V_c and high reverse peak pulse current I_{PP} should be used. The following figure shows the reference circuit of VCC.

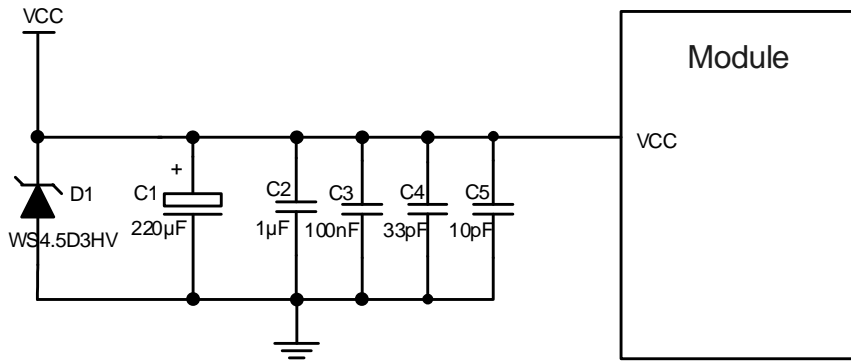


Figure 6: Reference Circuit of Power Supply

3.5.2. Reference Design for Power Supply

Power design for the module is very important, as the performance of the module largely depends on the power source. The power supply should be able to provide sufficient current up to 2.0A at least to the module. If the voltage drop between the input and output is not too high, it is suggested that an LDO should be used to supply power for the module. If there is a big voltage difference between the input source and the desired output (VCC), a buck converter is preferred to be used as the power supply.

The following figure shows a reference design for +5V input power source. The typical output of the power supply is about 3.3V and the maximum load current is 3.0A.

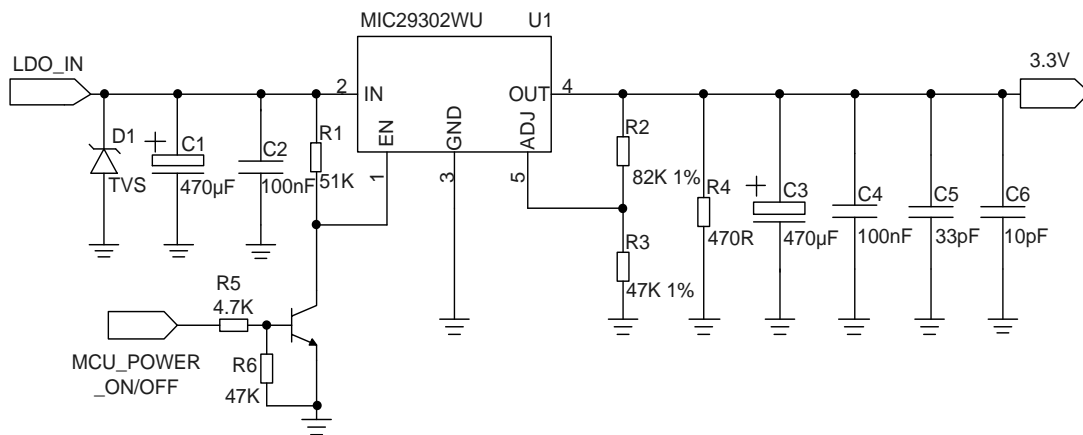


Figure 7: Reference Design of Power Supply

NOTE

In order to avoid damaging internal flash, please do not switch off the power supply when the module works normally. It is suggested that the power supply should be cut off after pulling down RESET# for about 100ms.

3.5.3. Monitor the Power Supply

AT+CBC command can be used to monitor the VCC voltage value. For more details, please refer to *document [2]*.

3.6. Power on/off Scenarios

3.6.1. Turn on the Module Using FUL_CARD_POWER_OFF#

The following table shows the pin definition of FUL_CARD_POWER_OFF#.

Table 7: Description of FUL_CARD_POWER_OFF# Pin

| Pin Name | Pin No. | Description | DC Characteristics | Comment |
|---------------------|---------|--|--|------------------------|
| FUL_CARD_POWER_OFF# | 6 | A signal control to power on/off the module. The module is powered off when it is at low level, while powered on when it is at high level. It is pulled to low level internally. | $V_{IHmin}=1.19V$ $V_{IHmax}=4.4V$ $V_{ILmin}=-0.3V$ $V_{ILmax}=0.2V$ | Pulled down internally |

EM05 can be turned on by driving the FUL_CARD_POWER_OFF# pin to a high level.

It is recommended to use a GPIO from host to control the FUL_CARD_POWER_OFF#. A simple reference circuit is illustrated in the following figure.

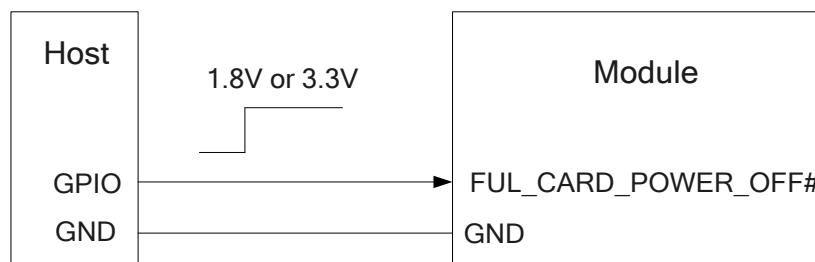


Figure 8: Turn on the Module Using GPIO

The module can also be turned on automatically. The FUL_CARD_POWER_OFF# should be pulled up to 1.8V or 3.3V (recommended) through a resistor, whose resistance should be 5kΩ~10kΩ. In this case, when the power supply of VCC is cut off, the module will be shut down.

A reference circuit is shown in the following figure.

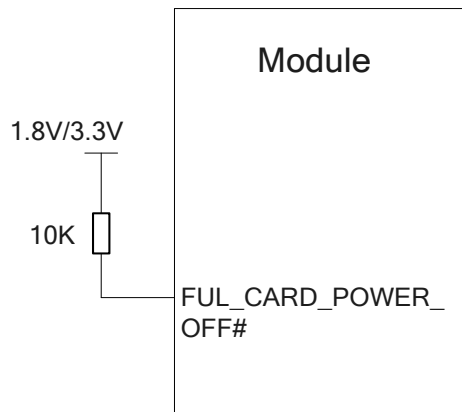


Figure 9: Turn on the Module Automatically

The timing of turning on the module is illustrated in the following figure.

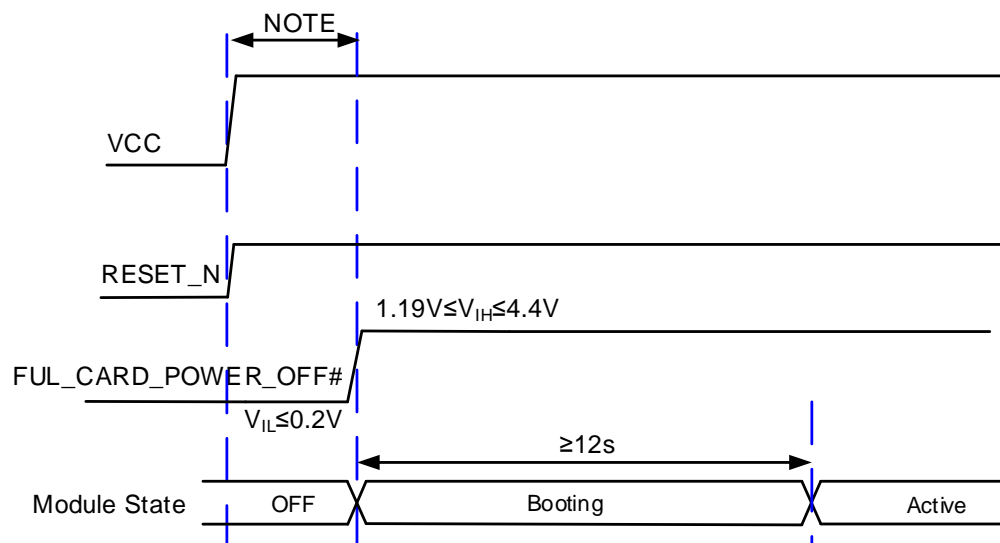


Figure 10: Timing of Turning on Module

NOTE

Please make sure that VCC is stable before pulling up FUL_CARD_POWER_OFF# pin. The time between them is no less than 30ms.

3.6.2. Turn off the Module

The following procedures can be applied to turn off the module:

- Hardware shutdown: Turn off the module using the FUL_CARD_POWER_OFF# pin.
- Software shutdown: Turn off the module using **AT+QPOWD**.

3.6.2.1. Turn off the Module Using the FUL_CARD_POWER_OFF# Pin

Driving the FUL_CARD_POWER_OFF# pin to low, the supply of PMIC will be powered off, then the module will be forced to shut down. But it is recommended to pull down RESET# for about 100ms before driving the FUL_CARD_POWER_OFF# pin to low, so as to avoid damage to the internal flash.

The timing of turning off the module via FUL_CARD_POWER_OFF# is illustrated in the following figure.

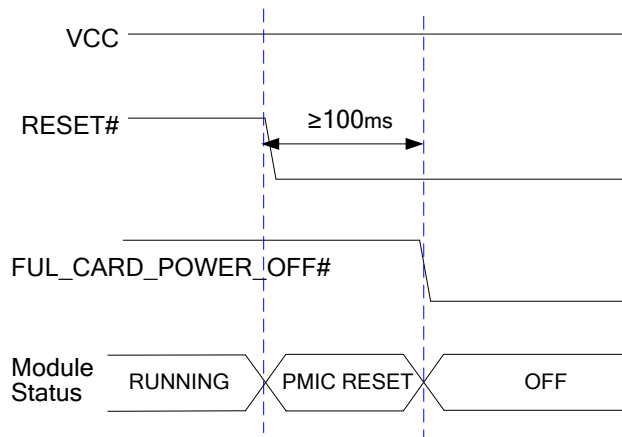


Figure 11: Timing of Turning off the Module Through FUL_CARD_POWER_OFF#

3.6.2.2. Turn off the Module Using AT Command

It is a safe way to use **AT+QPOWD** command to turn off the module. Please pull down FUL_CARD_POWER_OFF# pin, or cut off power supply of VCC after the module is shut down, otherwise the module will be powered on again.

The timing of turning off the module through AT command is illustrated as the following figure.

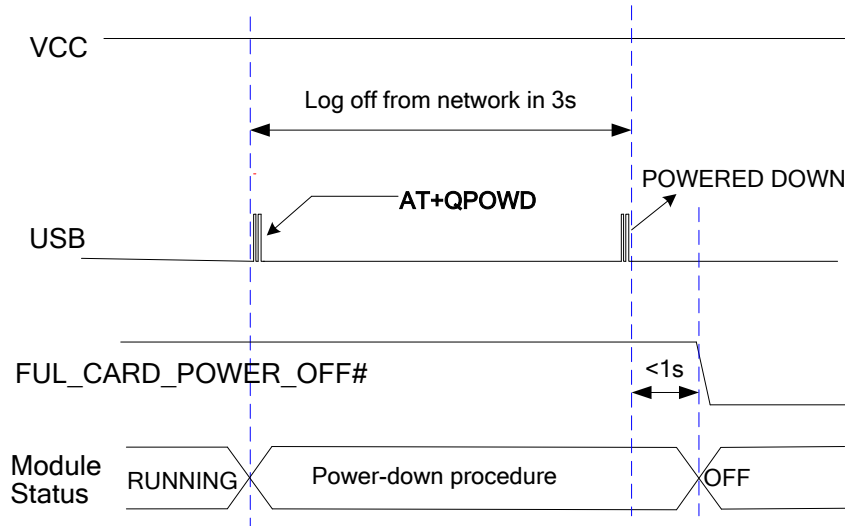


Figure 12: Timing of Turning off the Module Through AT Command

During power-down procedure, the module will log off from network and save important data. After the module logs off, it sends URC “POWERED DOWN” and shuts down the internal power supply. If the “POWERED DOWN” URC is outputted, the power on VCC pins can be cut off.

3.7. Reset the Module

The RESET# pin can be used to reset the module. The module can enter reset state by driving RESET# to a low level voltage for 150ms~460ms.

Table 8: Pin Description of RESET#

| Pin Name | Pin No. | Description | DC Characteristics | Comment |
|----------|---------|------------------|--------------------|---------|
| RESET# | 67 | Reset the module | $V_{ILmax}=0.5V$ | |

An open drain/collector driver or button can be used to control the RESET#.

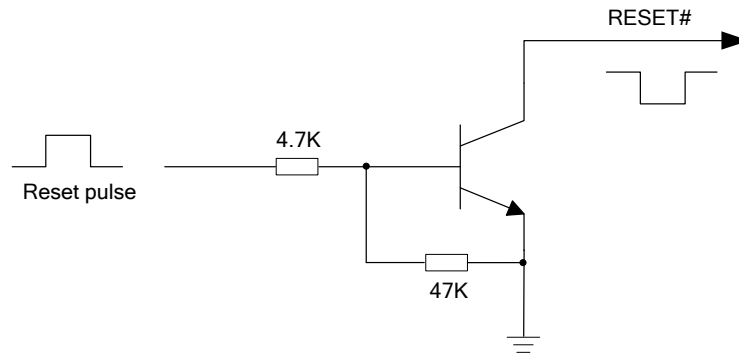


Figure 13: Reference Circuit of RESET# by Using Driving Circuit

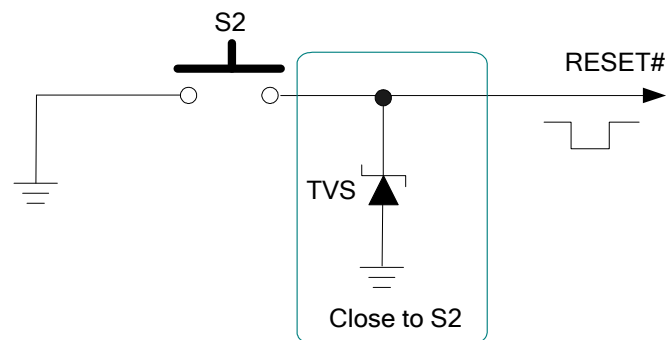


Figure 14: Reference Circuit of RESET# by Using Button

The timing of resetting the module is illustrated in the following figure.

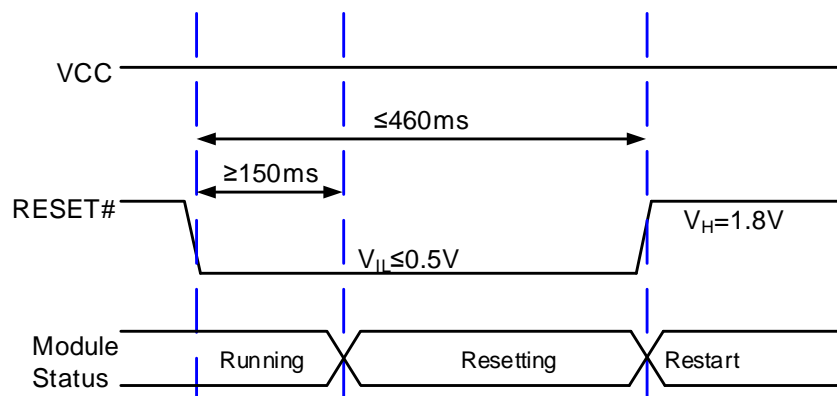


Figure 15: Timing of Resetting Module

NOTE

Please ensure that there is no large capacitance on RESET# pin.

3.8. (U)SIM Interface

The (U)SIM interface circuitry meets ETSI and IMT-2000 requirements. Both 1.8V and 3.0V (U)SIM cards are supported.

Table 9: Pin Definition of (U)SIM Interface

| Pin Name | Pin No. | I/O | Description | Comment |
|------------|---------|-----|--|---|
| USIM_VDD | 36 | PO | Power supply for (U)SIM card | Either 1.8V or 3.0V is supported by the module automatically. |
| USIM_DATA | 34 | IO | Data signal of (U)SIM card | |
| USIM_CLK | 32 | DO | Clock signal of (U)SIM card | |
| USIM_RESET | 30 | DO | Reset signal of (U)SIM card | |
| USIM_DET | 66 | DI | (U)SIM card insertion detection. Active high. | Pulled up to 1.8V internally. When (U)SIM card is present, it is at high level (pulled up to 1.8V). When (U)SIM card is absent, it is at low level. |

EM05 supports (U)SIM card hot-plug via the USIM_DET pin, which is a level trigger pin. The USIM_DET is normally short-circuited to ground when (U)SIM card is not inserted. When the (U)SIM card is inserted, USIM_DET will change from low level to high level. The rising edge indicates insertion of the (U)SIM card. When the (U)SIM card is pulled out, USIM_DET will change from high level to low level. This falling edge indicates the absence of the (U)SIM card.

The following figure shows a reference design of (U)SIM interface with normally closed (U)SIM card connector (CD switch closed).

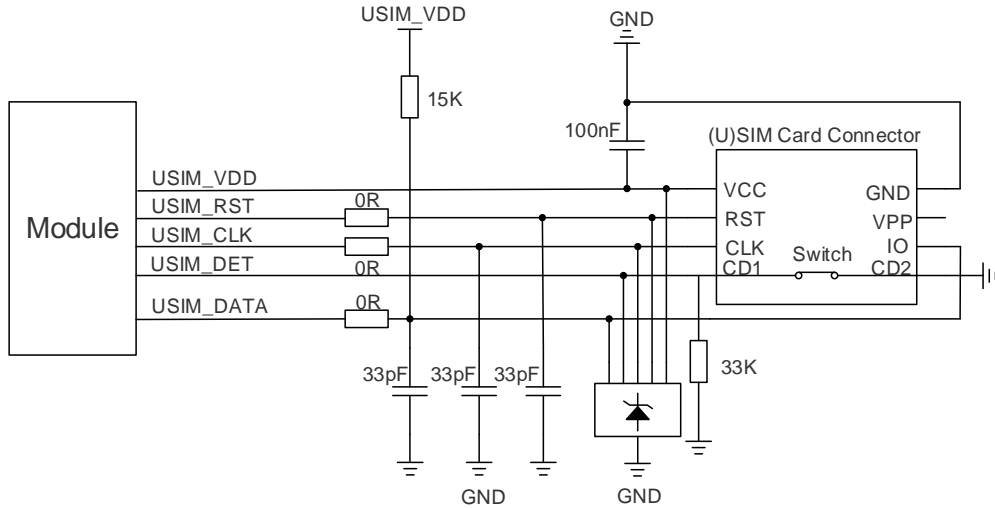


Figure 16: Reference Circuit of (U)SIM Interface with Normally Closed (U)SIM Card Connector

Normally Closed (U)SIM Card Connector

- When the (U)SIM is absent, the switch is closed and USIM_DET is at low level.
- When the (U)SIM is inserted, the switch is open and USIM_DET is at high level.

The following figure shows a reference design of (U)SIM interface with normally open (U)SIM card connector.

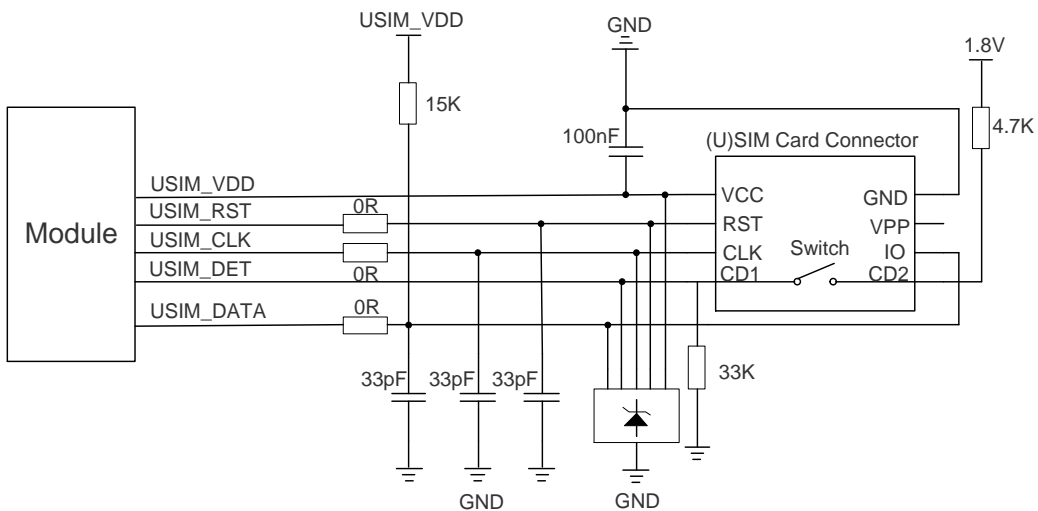


Figure 17: Reference Circuit of (U)SIM Interface with Normally Open (U)SIM Card Connector

Normally Open (U)SIM Card Connector

- When the (U)SIM is absent, the switch is open and USIM_DET is at low level.
- When the (U)SIM is inserted, the switch is closed and USIM_DET is at high level.

If (U)SIM card detection function is not needed, please keep USIM_DET unconnected. A reference circuit for (U)SIM interface with a 6-pin (U)SIM card connector is illustrated in the following figure.

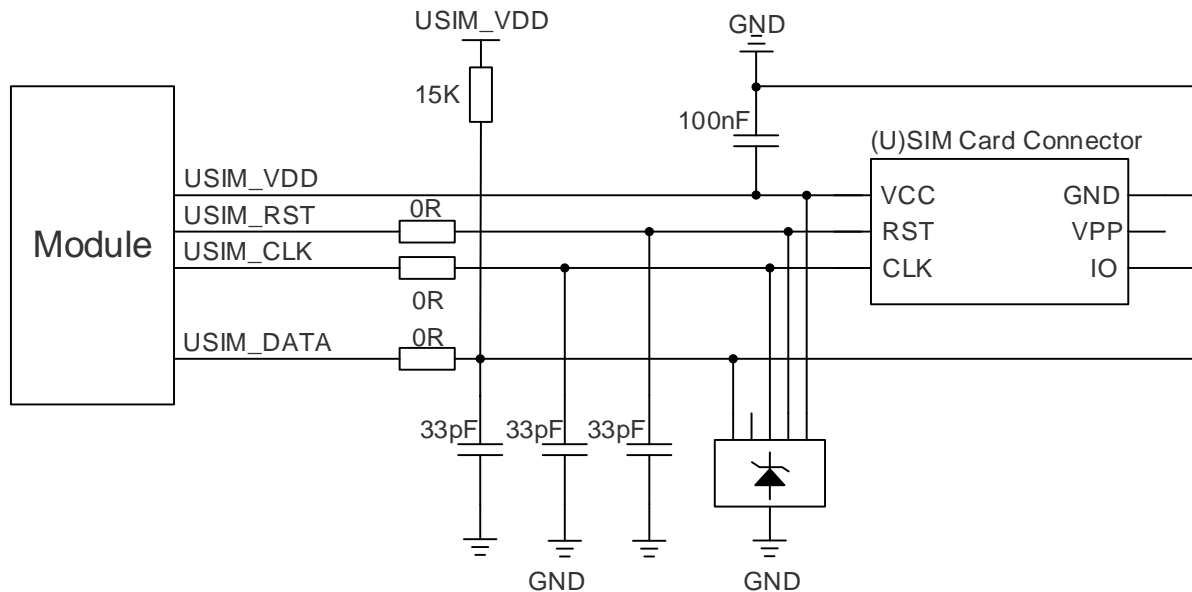


Figure 18: Reference Circuit of (U)SIM Interface with a 6-Pin (U)SIM Card Connector

In order to enhance the reliability and availability of the (U)SIM card in customers' applications, please follow the criteria below in (U)SIM circuit design:

- Keep placement of (U)SIM card connector to the module as close as possible. Keep the trace length less than 200mm as far as possible.
- Keep (U)SIM card signals away from RF and VCC traces.
- Keep the trace width of ground and USIM_VDD no less than 0.5mm to maintain the same electric potential.
- To avoid cross-talk between USIM_DATA and USIM_CLK, keep them away from each other and shield them with surrounded ground.
- In order to offer good ESD protection, it is recommended to add a TVS diode array whose parasitic capacitance should not be more than 10pF. The 0Ω resistors should be added in series between the module and the (U)SIM card so as to suppress EMI spurious transmission and enhance ESD protection. The 33pF capacitors are used for filtering interference of RF. Please note that the (U)SIM peripheral circuit should be close to the (U)SIM card connector.
- The pull-up resistor on USIM_DATA line can improve anti-jamming capability upon applying of long layout trace and sensitive occasion, and should be placed close to the (U)SIM card connector.

3.9. USB Interface

The following table shows the pin definition of USB interface.

Table 10: Pin Definition of USB Interface

| Pin Name | Pin No. | I/O | Description | Comment |
|----------|---------|-----|-------------------------------|---------------------------------------|
| USB_DP | 7 | IO | USB differential data bus (+) | Require differential impedance of 90Ω |
| USB_DM | 9 | IO | USB differential data bus (-) | Require differential impedance of 90Ω |

EM05 is compliant with USB 2.0 specification. It can only be used as a slave device. Meanwhile, it supports high speed (480Mbps) and full speed (12Mbps) mode. The USB interface is used for AT command communication, data transmission, GNSS NMEA output, software debugging and firmware upgrade. The following figure shows the reference circuit of USB interface.

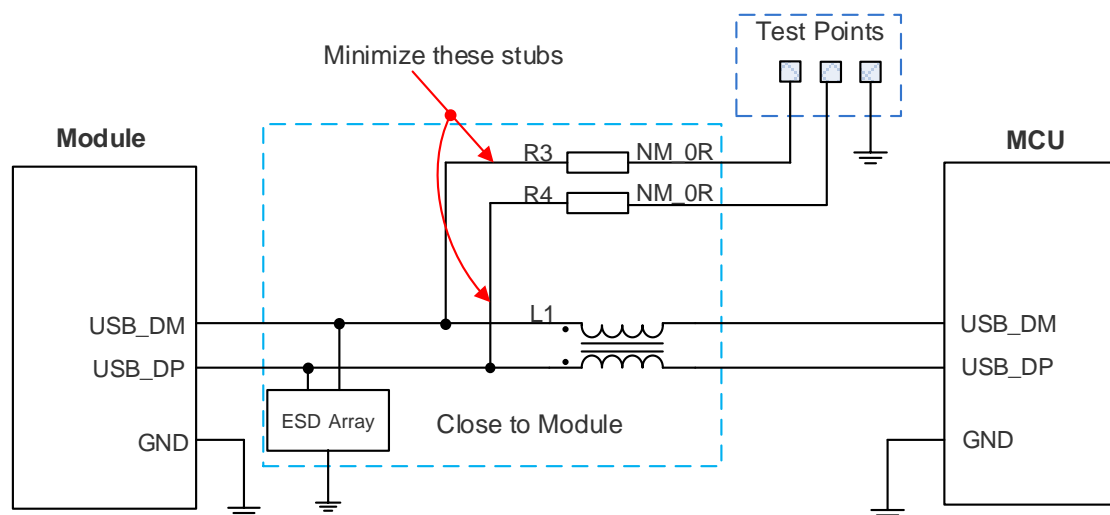


Figure 19: Reference Circuit of USB Interface

A common mode choke L1 is recommended to be added in series between the module and customer's MCU in order to suppress EMI spurious transmission. Meanwhile, the 0Ω resistors (R3 and R4) should be added in series between the module and the test points so as to facilitate debugging, and the resistors are not mounted by default. In order to ensure the integrity of USB data line signal, L1, R3 and R4 components must be placed close to the module, and also these resistors should be placed close to each other. The extra stubs of trace must be as short as possible.

The following principles should be complied with when designing the USB interface, so as to meet USB 2.0 specification.

- It is important to route the USB signal traces as differential pairs with total grounding. The impedance of USB differential trace is 90Ω.
- Do not route signal traces under crystals, oscillators, magnetic devices or RF signal traces. It is important to route the USB differential traces in inner-layer with ground shielding on not only upper and lower layers but also right and left sides.
- Pay attention to the influence of junction capacitance of ESD protection components on USB data lines. Typically, the capacitance value should be less than 2pF.
- Keep the ESD protection components as close to the USB connector as possible.

3.10. PCM and I2C Interfaces

EM05 provides one Pulse Code Modulation (PCM) digital interface for audio design, which supports 16-bit linear data formats and supports the following modes:

- Primary mode (short frame synchronization, works as both master and slave)
- Auxiliary mode (long frame synchronization, works as master only)

In primary mode, the data is sampled on the falling edge of the PCM_CLK and transmitted on the rising edge. The PCM_SYNC falling edge represents the MSB. In this mode, the PCM interface supports 256kHz, 512kHz, 1024kHz or 2048kHz PCM_CLK at 8kHz PCM_SYNC, and also supports 4096kHz PCM_CLK at 16kHz PCM_SYNC. The following figure shows the timing relationship in primary mode with 8kHz PCM_SYNC and 2048kHz PCM_CLK.

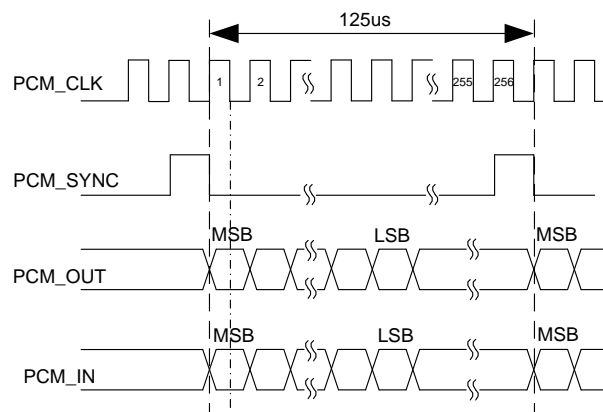


Figure 20: Primary Mode Timing

In auxiliary mode, the data is sampled on the falling edge of the PCM_CLK and transmitted on the rising edge. The PCM_SYNC rising edge represents the MSB. In this mode, the PCM interface operates with a 256kHz, 512kHz, 1024kHz or 2048kHz PCM_CLK and an 8kHz, 50% duty cycle PCM_SYNC. The following figure shows the timing relationship in auxiliary mode with 8kHz PCM_SYNC and 256kHz PCM_CLK.

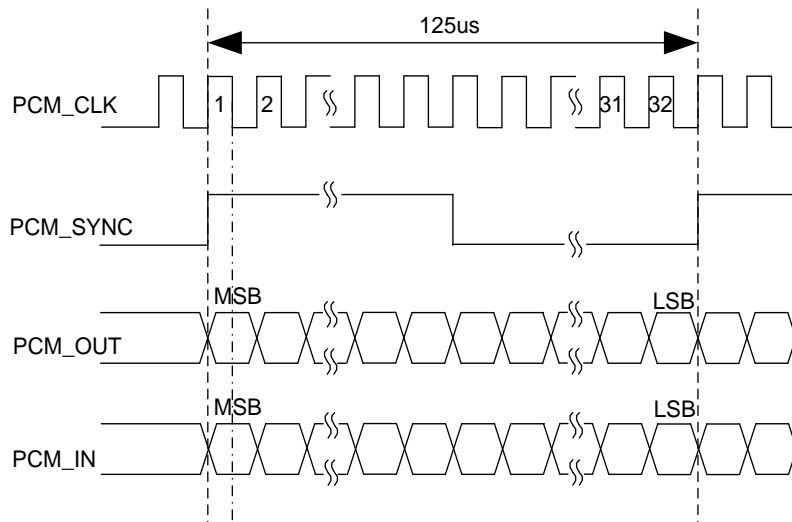


Figure 21: Auxiliary Mode Timing

The following table shows the pin definition of PCM and I2C interfaces which can be applied on audio codec design.

Table 11: Pin Definition of PCM and I2C Interfaces

| Pin Name | Pin No. | I/O | Description | Comment |
|----------|---------|-----|---------------------------------------|------------------------------|
| PCM_IN | 22 | DI | PCM data input | 1.8V power domain |
| PCM_OUT | 24 | DO | PCM data output | 1.8V power domain |
| PCM_SYNC | 28 | IO | PCM data frame synchronization signal | 1.8V power domain |
| PCM_CLK | 20 | IO | PCM data bit clock | 1.8V power domain |
| I2C_SCL | 40 | DO | I2C serial clock | Pulled up to 1.8V internally |
| I2C_SDA | 42 | IO | I2C serial data | Pulled up to 1.8V internally |

Clock and mode can be configured by AT command, and the default configuration is master mode using short frame synchronization format with 2048kHz PCM_CLK and 8kHz PCM_SYNC. Please refer to **document [2]** about **AT+QDAI** command for details.

The following figure shows a reference design of PCM interface with external codec IC.

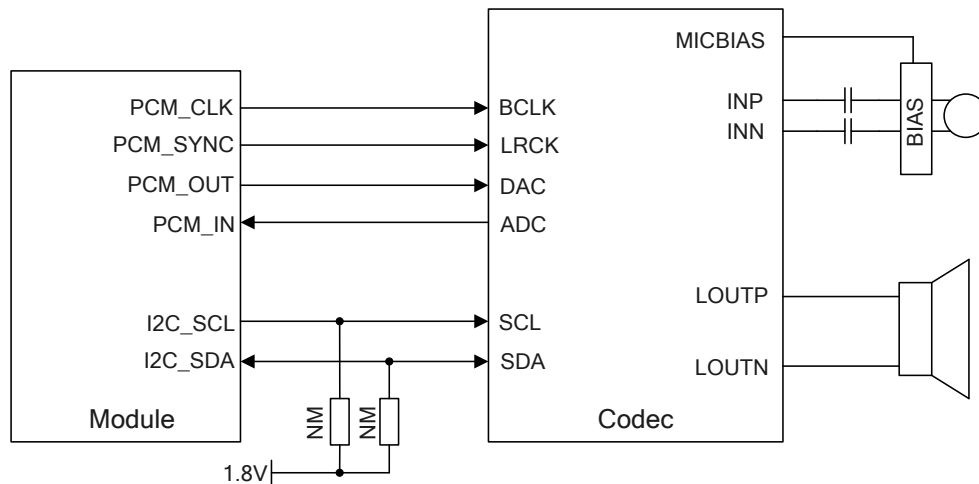


Figure 22: Reference Circuit of PCM Application with Audio Codec

NOTES

1. It is recommended to reserve a RC ($R=22\Omega$, $C=22pF$) circuit on the PCM lines, especially for PCM_CLK.
2. EM05 works as a master device pertaining to I2C interface.
3. EM05-CML does not support I2C interface.

3.11. Control and Indication Signals

The following table shows the pin definition of control and indication signals.

Table 12: Pin Definition of Control and Indication Signals

| Pin Name | Pin No. | I/O | Description | Power Domain |
|-------------|---------|-----|--|--------------|
| W_DISABLE1# | 8 | DI | Airplane mode control. Active low. | 1.8V/3.3V |
| LED# | 10 | OD | An open drain and active low signal to indicate the RF status of the module. | |
| WOWWAN# | 23 | OD | An open drain and active low signal to wake up the host. | |
| W_DISABLE2# | 26 | DI | GNSS disablement. Active low. | 1.8V |
| DPR | 25 | DI | Body SAR detection. | 1.8V |

| | | | |
|-------------|----|-------------------------|------|
| GNSS_IRQ | 44 | GNSS interrupt request. | 1.8V |
| TX_BLANKING | 48 | | 1.8V |

NOTE

Functions including body SAR detection (DPR), transmit blanking signal for external GNSS module (TX_BLANKING), GNSS disable (W_DISABLE2#) and GNSS interrupt request (GNSS_IRQ) are under development.

3.11.1. W_DISABLE1# Signal

EM05 provides a W_DISABLE1# signal to disable or enable RF function through hardware operation. Besides, RF function can also be enabled or disabled through software AT commands. For more details, please refer to **Chapter 3.4.2**.

Table 13: Function of W_DISABLE1#

| W_DISABLE1# | RF Function |
|-------------|---|
| High Level | RF function is determined by software AT commands. Default: enabled. |
| Low Level | Disabled |

3.11.2. LED# Signal

The LED# signal of EM05 is used to indicate the RF status of the module, whose current consumption is up to 40mA. According to the following circuit, in order to reduce the current consumption of the LED, a resistor must be placed in series with the LED. The LED# signal is active low; when it is at low level, the LED is emitting light.

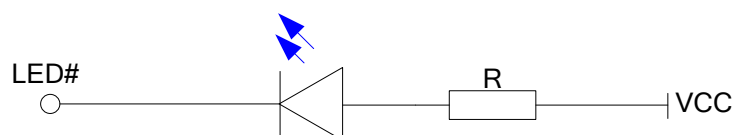


Figure 23: LED# Signal Reference Circuit Diagram

The following table shows the RF status indications of the LED# signal.

Table 14: RF Status Indications of LED# Signal

| LED# | Description |
|----------------------------|--|
| Low Level (Light On) | RF function is turned on. |
| High Impedance (Light Off) | RF function is turned off if any of the following circumstances occurs: <ul style="list-style-type: none"> • The (U)SIM card is not powered. • W_DISABLE1# signal is at low level (RF function is disabled). • AT+CFUN=0 • AT+CFUN=4 |

3.11.3. WOWWAN# Signal

The WOWWAN# signal is an open drain signal, which requires a pull-up resistor on the host. When a URC returns, a 1s low level pulse will be outputted to wake up the host. The state of WOWWAN# signal is shown as below.

Table 15: State of WOWWAN# Signal

| WOWWAN# | Operating Status |
|------------------------------------|------------------|
| Output 1s low level (pulse signal) | Call/SMS/Data |
| Always at high level | Idle/Sleep |

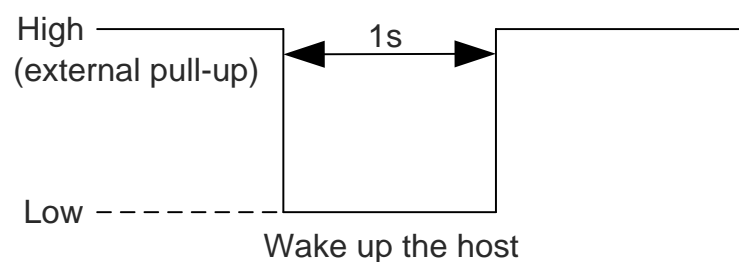


Figure 24: WOWWAN# Behavior

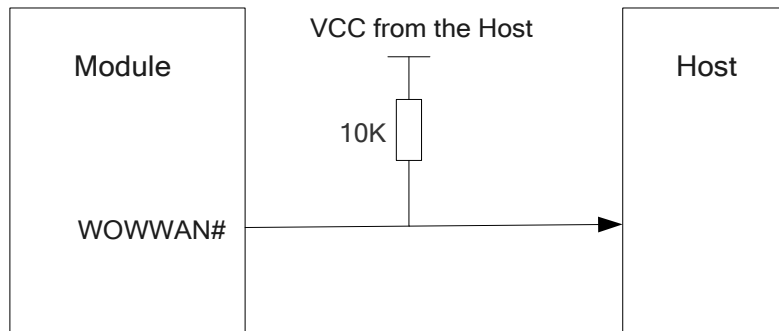


Figure 25: WOWWAN# Signal Reference Circuit Diagram

3.11.4. DPR Signal*

EM05 provides an input pin DPR (Dynamic Power Reduction) for body SAR detection. The signal is sent by a host system proximity sensor to the wireless device to provide an input trigger which will reduce output power in radio transmission.

Table 16: Function of DPR Signal

| DPR | Function |
|---------------|---|
| High/Floating | Max transmit power will not be backed off. |
| Low | Max transmit power will be backed off by executing AT commands. |

NOTE

“(★)” means under development.

3.12. Configuration Pins

EM05 provides 4 configuration pins to configure the M.2 interface type, and it is configured as WWAN-SSIC 0 by default.

Table 17: Pin Definition of Configuration Pins

| Pin Name | Pin No. | Description |
|----------|---------|------------------------------|
| CONFIG_3 | 1 | Connected to GND internally. |
| CONFIG_0 | 21 | NC |
| CONFIG_1 | 69 | Connected to GND internally. |
| CONFIG_2 | 75 | Connected to GND internally. |

The 4 configuration pins on EM05 module are defined as below:

Table 18: List of Configuration Pins

| Config_0 (Pin 21) | Config_1 (Pin 69) | Config_2 (Pin 75) | Config_3 (Pin 1) | Module Type and Main Host Interface | Port Configuration |
|----------------------|----------------------|----------------------|---------------------|--|-----------------------|
| NC | GND | GND | GND | WWAN-SSIC | 0 |

4 GNSS Receiver

4.1. General Description

EM05 includes a fully integrated Global Navigation Satellite System (GNSS) solution that supports Gen8C-Lite of Qualcomm (GPS, GLONASS, BeiDou/Compass, Galileo and QZSS).

EM05 supports standard NMEA-0183 protocol, and outputs NMEA sentences at 1Hz data update rate via USB interface by default.

By default, EM05 GNSS engine is switched off. It has to be switched on via AT command. For more details about GNSS engine technology and configurations, please refer to **document [3]**.

5 Antenna Connection

EM05 is mounted with three 2mm × 2mm antenna connectors for external antenna connection: a main antenna connector, an Rx-diversity antenna connector, and a GNSS antenna connector. The impedance of the antenna connectors is 50Ω.

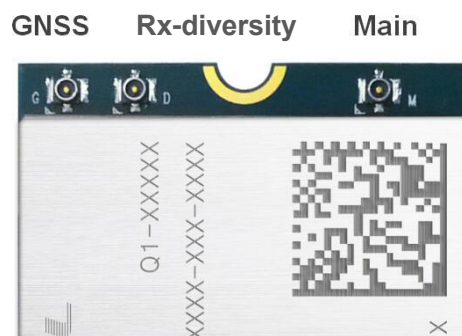


Figure 26: RF Antenna Connectors

5.1. Operating Frequency

Table 19: Module Operating Frequencies

| 3GPP Band | Transmit | Receive | Unit |
|-----------|-----------|-----------|------|
| B1 | 1920~1980 | 2110~2170 | MHz |
| B3 | 1710~1785 | 1805~1880 | MHz |
| B5 | 824~849 | 869~894 | MHz |
| BC0 | 824~849 | 869~894 | MHz |
| B7 | 2500~2570 | 2620~2690 | MHz |
| B8 | 880~915 | 925~960 | MHz |
| B20 | 832~862 | 791~821 | MHz |

| | | | |
|-----|-----------|-----------|-----|
| B28 | 703~748 | 758~803 | MHz |
| B38 | 2570~2620 | 2570~2620 | MHz |
| B39 | 1880~1920 | 1880~1920 | MHz |
| B40 | 2300~2400 | 2300~2400 | MHz |
| B41 | 2555~2655 | 2555~2655 | MHz |

5.2. GNSS Frequency

The following tables show the frequency specification of GNSS antenna.

Table 20: GNSS Frequency

| Type | Frequency | Unit |
|---------|----------------|------|
| GPS | 1575.42±1.023 | MHz |
| GLONASS | 1597.5~1605.8 | MHz |
| Galileo | 1575.42±2.046 | MHz |
| BeiDou | 1561.098±2.046 | MHz |
| QZSS | 1575.42 | MHz |

5.3. Antenna Installation

5.3.1. Antenna Requirements

The following table shows the requirements on main antenna, Rx-diversity antenna and GNSS antenna.

Table 21: Antenna Requirements

| Type | Requirements |
|------|--|
| GNSS | Frequency range: 1559MHz~1609MHz Polarization: RHCP or linear VSWR: < 2 (Typ.) |

| | |
|----------------|---|
| | Passive antenna gain: > 0dBi |
| WCDMA/CDMA/LTE | VSWR: ≤ 2 Efficiency: > 30% Max input power: 50W Input impedance: 50 Ω Cable insertion loss: < 1dB (WCDMA B8, CDMA BC0, LTE B5/B8/B20/B28) Cable insertion loss: < 1.5dB (WCDMA B1, LTE B1/B3/B39) Cable insertion loss < 2dB (LTE B7/B38/B40/B41) |

5.3.2. Antenna Connectors and Mating Plugs

EM05 is mounted with RF connectors (receptacles) for convenient antenna connection. The dimensions of the antenna connectors are shown as below.

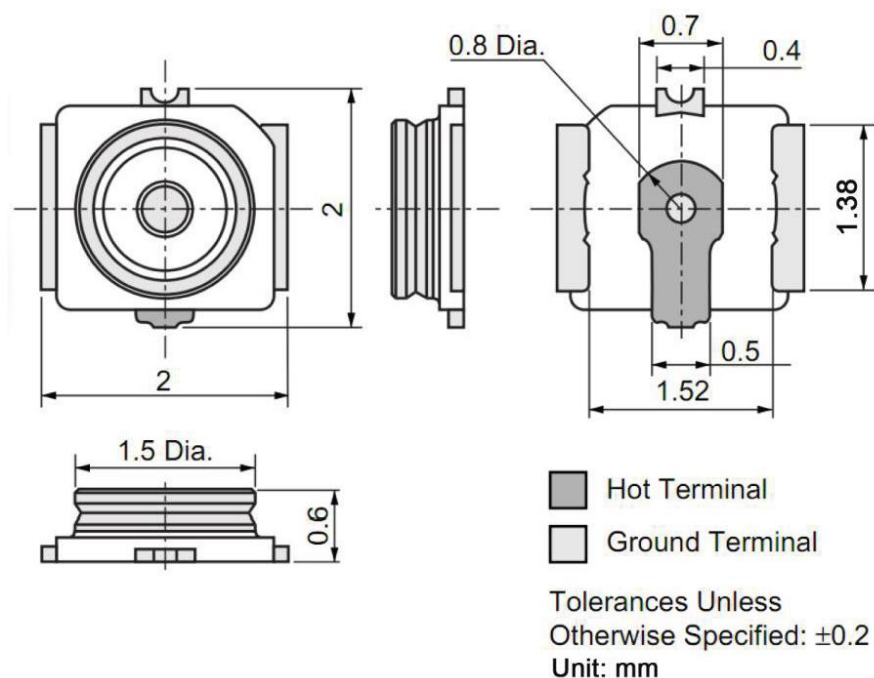


Figure 27: Dimensions of the Receptacles (Unit: mm)

Table 22: Major Specifications of Antenna Connectors

| Item | Specification |
|------------------------------------|--|
| Nominal Frequency Range | DC to 6 GHz |
| Nominal Impedance | 50Ω |
| Temperature Rating | -40°C to +85°C |
| Voltage Standing Wave Ratio (VSWR) | Meet the requirements of: Max 1.3 (DC~3GHz) Max 1.45 (3GHz~6GHz) |

The receptacle accepts two types of mating plugs to meet two maximum mated heights: 1.20mm (using a Ø0.81mm coaxial cable) and 1.45mm (using a Ø1.13mm coaxial cable).

The following figure shows the specifications of mating plugs using Ø0.81mm coaxial cables.

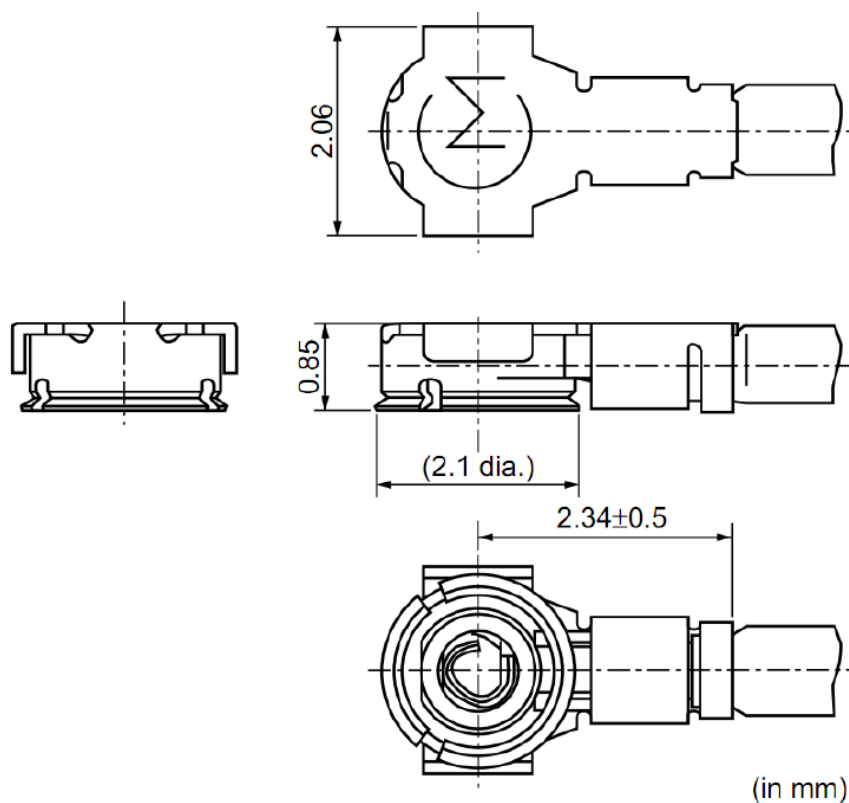


Figure 28: Specifications of Mating Plugs Using Ø0.81mm Coaxial Cables

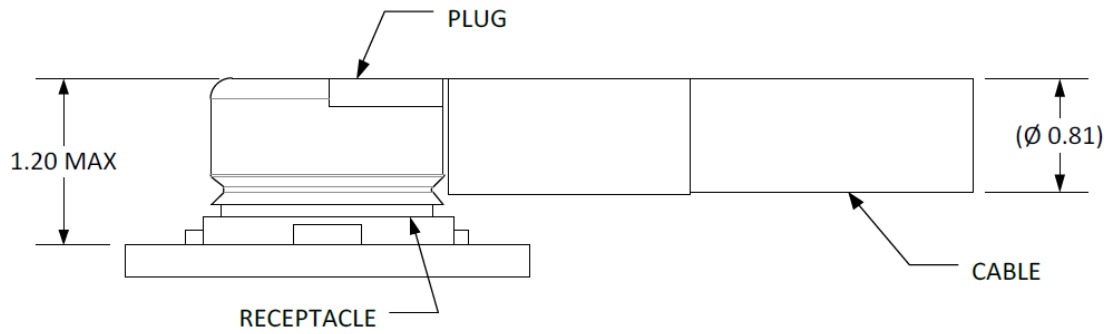


Figure 29: Connection between the RF Connector and the 0.81mm Coaxial Cable

The following figure illustrates the connection between the receptacle antenna connector on EM05 and the mating plug using a Ø1.13mm coaxial cable.

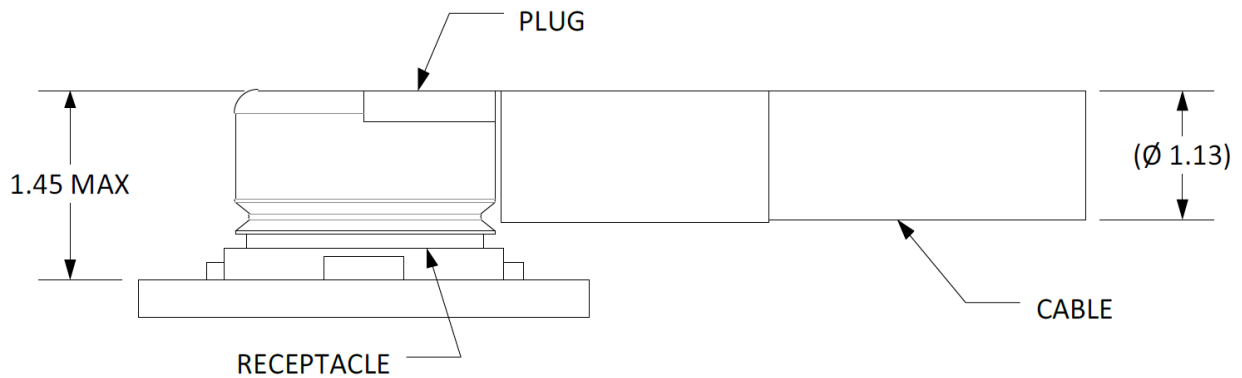


Figure 30: Connection between Receptacle and Mating Plug Using Ø1.13mm Coaxial Cable

6 Electrical, Reliability and Radio Characteristics

6.1. Absolute Maximum Ratings

Absolute maximum ratings for power supply and voltage on digital and analog pins of the module are listed in the following table.

Table 23: Absolute Maximum Ratings

| Parameter | Min. | Max. | Unit |
|-------------------------|------|------|------|
| VCC | -0.3 | 4.7 | V |
| Peak Current of VCC | 0 | 1.0 | A |
| Voltage at Digital Pins | -0.3 | 2.3 | V |

6.2. Power Supply Requirements

The input voltage of EM05 is 3.135V~4.4V, as specified by **document [1]**. The following table shows the power supply requirements of EM05.

Table 24: Power Supply Requirements

| Parameter | Description | Min. | Typ. | Max. | Unit |
|-----------|--------------|-------|------|------|------|
| VCC | Power supply | 3.135 | 3.3 | 4.4 | V |

6.3. I/O Requirements

Table 25: I/O Requirements

| Parameter | Description | Min. | Max. | Unit |
|-----------------|---------------------|-----------------------|-----------------------|------|
| V _{IH} | Input high voltage | $0.7 \times V_{DD18}$ | $V_{DD18}+0.3$ | V |
| V _{IL} | Input low voltage | -0.3 | $0.3 \times V_{DD18}$ | V |
| V _{OH} | Output high voltage | $V_{DD18}-0.5$ | V_{DD18} | V |
| V _{OL} | Output low voltage | 0 | 0.4 | V |

NOTE

The maximum voltage value of V_{IL} for RESET# signal and W_DISABLE1# signal is 0.5V.

6.4. Operation and Storage Temperatures

Table 26: Operation and Storage Temperatures

| Parameter | Min. | Typ. | Max. | Unit |
|---|------|------|------|------|
| Operation Temperature Range ¹⁾ | -30 | +25 | +70 | °C |
| Extended Temperature Range ²⁾ | -40 | | +85 | °C |
| Storage Temperature Range | -40 | | +90 | °C |

NOTES

- ¹⁾ Within operation temperature range, the module is 3GPP compliant.
- ²⁾ Within extended temperature range, the module remains the ability to establish and maintain a voice, SMS, data transmission, etc. There is no unrecoverable malfunction. There are also no effects on radio spectrum and no harm to radio network. Only one or more parameters like P_{out} might reduce in their value and exceed the specified tolerances. When the temperature returns to the normal operating temperature levels, the module will meet 3GPP specifications again.

6.5. Current Consumption

The values of current consumption are shown below.

Table 27: Current Consumption of EM05-CE

| Parameter | Description | Conditions | Typ. | Unit |
|-----------|--------------------------------|----------------------------------|------|---------|
| I_{VCC} | OFF state | Power down | 5 | μA |
| | | AT+CFUN=0 | 2.3 | mA |
| | Sleep state (USB connected) | WCDMA PF=64 | 3.3 | mA |
| | | WCDMA PF=128 | 3.0 | mA |
| | | WCDMA PF=256 | 2.8 | mA |
| | | LTE-FDD PF=64 | 3.9 | mA |
| | | LTE-FDD PF=128 | 3.3 | mA |
| | | LTE-TDD PF=256 | 3.0 | mA |
| | | LTE-TDD PF=64 | 3.9 | mA |
| | | LTE-TDD PF=128 | 3.3 | mA |
| | | LTE-TDD PF=128 | 2.9 | mA |
| | Idle state | AT+CFUN=0 (USB connected) | 25.0 | mA |
| | | WCDMA PF=64 (USB connected) | 28.0 | mA |
| | | WCDMA PF=64 (USB disconnected) | 18.0 | mA |
| | | BC0 @ SCI=1 (USB connected) | 31.0 | mA |
| | | LTE-FDD PF=64 (USB connected) | 29.0 | mA |
| | | LTE-FDD PF=64 (USB disconnected) | 19.0 | mA |
| | | LTE-TDD PF=64 (USB connected) | 29.0 | mA |
| | | LTE-TDD PF=64 (USB disconnected) | 19.0 | mA |

| | | | | |
|--|--------------------------------|---------------------------|-------|----|
| | CDMA data transfer (GNSS off) | BC0 Max Power @ 24.08dBm | 577.0 | mA |
| | | WCDMA B1 HSDPA @ 21.78dBm | 570.0 | mA |
| | WCDMA data transfer (GNSS off) | WCDMA B1 HSUPA @ 21.64dBm | 570.0 | mA |
| | | WCDMA B8 HSDPA @ 22.13dBm | 530.0 | mA |
| | | WCDMA B8 HSUPA @ 22.19dBm | 560.0 | mA |
| | | | | |
| | LTE data transfer (GNSS off) | LTE-FDD B1 @ 23.25dBm | 750.0 | mA |
| | | LTE-FDD B3 @ 23.35dBm | 740.0 | mA |
| | | LTE-FDD B5 @ 23.04dBm | 640.0 | mA |
| | | LTE-FDD B8 @ 23.45dBm | 640.0 | mA |
| | | LTE-TDD B38 @ 23.41dBm | 400.0 | mA |
| | | LTE-TDD B39 @ 23.41dBm | 295.0 | mA |
| | | LTE-TDD B40 @ 23.17dBm | 430.0 | mA |
| | | LTE-TDD B41 @ 23.37dBm | 390.0 | mA |
| | | | | |
| | | | | |
| | WCDMA voice call | WCDMA B1 @ 22.89dBm | 600.0 | mA |
| | | WCDMA B8 @ 22.82dBm | 550.0 | mA |
| | CDMA voice call | BC0 Max Power @ 23.93dBm | 598.0 | mA |
| | | BC0 Min Power @ -60.07dBm | 123.0 | mA |

Table 28: Current Consumption of EM05-CML

| Parameter | Description | Conditions | Typ. | Unit |
|------------------|-----------------------------|------------------|------|------|
| I _{VCC} | OFF state | Power down | 5 | μA |
| | Sleep state (USB connected) | AT+CFUN=0 | 2.3 | mA |
| | | LTE-FDD PF=64 | 3.9 | mA |
| | | LTE-FDD PF=128 | 3.3 | mA |
| | | | | |

| | | | |
|------------|----------------------------------|-------|----|
| Idle state | LTE-TDD PF=256 | 3.0 | mA |
| | LTE-TDD PF=64 | 3.9 | mA |
| | LTE-TDD PF=128 | 3.3 | mA |
| | LTE-TDD PF=128 | 2.9 | mA |
| | AT+CFUN=0 (USB connected) | 25.0 | mA |
| | LTE-FDD PF=64 (USB connected) | 29.0 | mA |
| | LTE-FDD PF=64 (USB disconnected) | 19.0 | mA |
| | LTE-TDD PF=64 (USB connected) | 29.0 | mA |
| | LTE-TDD PF=64 (USB disconnected) | 19.0 | mA |
| | LTE-TDD B38 @ 23dBm | 400.0 | mA |
| | LTE-TDD B39 @ 23dBm | 295.0 | mA |
| | LTE-TDD B40 @ 23dBm | 430.0 | mA |
| | LTE-TDD B41 @ 23dBm | 390.0 | mA |
| | | | |

Table 29: Current Consumption of EM05-E

| Parameter | Description | Conditions | Typ. | Unit |
|------------------|-------------|----------------------------------|------|------|
| I _{VCC} | OFF state | Power down | 20 | μA |
| | Sleep state | AT+CFUN=0 | 1.1 | mA |
| | | WCDMA PF=64 (USB disconnected) | 2.1 | mA |
| | | WCDMA PF=64 (USB suspend) | 2.4 | mA |
| | | WCDMA PF=128 (USB disconnected) | 1.6 | mA |
| | | WCDMA PF=256 (USB disconnected) | 1.4 | mA |
| | | WCDMA PF=512 (USB disconnected) | 1.3 | mA |
| | | LTE-FDD PF=32 (USB disconnected) | 3.9 | mA |
| | | LTE-FDD PF=64 (USB disconnected) | 2.5 | mA |
| | | | | |

| | | | |
|--------------------------------|-----------------------------------|-------|----|
| | LTE-FDD PF=64 (USB suspend) | 2.7 | mA |
| | LTE-FDD PF=128 (USB disconnected) | 1.9 | mA |
| | LTE-FDD PF=256 (USB disconnected) | 1.5 | mA |
| | LTE-TDD PF=32 (USB disconnected) | 4.2 | mA |
| | LTE-TDD PF=64 (USB disconnected) | 2.6 | mA |
| | LTE-TDD PF=64 (USB suspend) | 2.9 | mA |
| | LTE-TDD PF=128 (USB disconnected) | 1.9 | mA |
| | LTE-TDD PF=256 (USB disconnected) | 1.5 | mA |
| Idle state | WCDMA PF=64 (USB disconnected) | 21.0 | mA |
| | WCDMA PF=64 (USB connected) | 32.0 | mA |
| | LTE-FDD PF=64 (USB disconnected) | 20.0 | mA |
| | LTE-FDD PF=64 (USB connected) | 32.0 | mA |
| | LTE-TDD PF=64 (USB disconnected) | 22.0 | mA |
| | LTE-TDD PF=64 (USB connected) | 33.0 | mA |
| WCDMA data transfer (GNSS off) | WCDMA B1 HSDPA @ 21.88dBm | 580.0 | mA |
| | WCDMA B1 HSUPA @ 21.17dBm | 576.0 | mA |
| | WCDMA B8 HSDPA @ 22.10dBm | 568.0 | mA |
| | WCDMA B8 HSUPA @ 21.54dBm | 567.0 | mA |
| LTE data transfer (GNSS off) | LTE-FDD B1 @ 22.65dBm | 787.0 | mA |
| | LTE-FDD B3 @ 22.65dBm | 854.0 | mA |
| | LTE-FDD B7 @ 22.93dBm | 952.0 | mA |
| | LTE-FDD B8 @ 22.42dBm | 746.0 | mA |
| | LTE-FDD B20 @ 22.17dBm | 872.0 | mA |
| | LTE-FDD B28 @ 22.23dBm | 800.0 | mA |
| | LTE-TDD B38 @ 22.72dBm | 529.0 | mA |

| | | | | |
|--|---------------------|------------------------|-------|----|
| | WCDMA voice call | LTE-TDD B41 @ 22.72dBm | 514.0 | mA |
| | | WCDMA B1 @ 22.86dBm | 634.0 | mA |
| | | WCDMA B8 @ 23.11dBm | 613.0 | mA |

6.6. RF Output Power

The following table shows the RF output power of EM05 module.

Table 30: Conducted RF Output Power of EM05-CE

| Frequency | Max. | Min. |
|---------------|--------------|----------|
| LTE-FDD Bands | 23dBm±2dB | < -39dBm |
| LTE-TDD Bands | 23dBm±2dB | < -39dBm |
| CDMA Band | 24dBm+2/-1dB | < -49dBm |
| WCDMA Bands | 24dBm+1/-3dB | < -49dBm |

Table 31: Conducted RF Output Power of EM05-CML

| Frequency | Max. | Min. |
|---------------|-----------|----------|
| LTE-TDD Bands | 23dBm±2dB | < -39dBm |

Table 32: Conducted RF Output Power of EM05-E

| Frequency | Max. | Min. |
|---------------|--------------|----------|
| LTE-FDD Bands | 23dBm±2dB | < -39dBm |
| LTE-TDD Bands | 23dBm±2dB | < -39dBm |
| WCDMA Bands | 24dBm+1/-3dB | < -49dBm |

6.7. RF Receiving Sensitivity

The following tables show conducted RF receiving sensitivity of EM05 series module.

Table 33: Conducted RF Receiving Sensitivity of EM05-CML

| Frequency | Primary | Diversity | SIMO | 3GPP (SIMO) |
|---------------------|----------|-----------|-----------|-------------|
| LTE-TDD B38 (10MHz) | -97.5dBm | -99.0dBm | -101.2dBm | -96.3dBm |
| LTE-TDD B39 (10MHz) | -99.0dBm | -100.2dBm | -102.5dBm | -96.3dBm |
| LTE-TDD B40 (10MHz) | -98.0dBm | -98.2dBm | -101.3dBm | -96.3dBm |
| LTE-TDD B41 (10MHz) | -97.5dBm | -99.0dBm | -101.0dBm | -94.3dBm |

Table 34: Conducted RF Receiving Sensitivity of EM05-CE

| Frequency | Primary | Diversity | SIMO | 3GPP (SIMO) |
|---------------------|-----------|-----------|-----------|-------------|
| LTE-TDD B38 (10MHz) | -97.5dBm | -99.0dBm | -101.2dBm | -96.3dBm |
| LTE-TDD B39 (10MHz) | -99.0dBm | -100.2dBm | -102.5dBm | -96.3dBm |
| LTE-TDD B40 (10MHz) | -98.0dBm | -98.2dBm | -101.3dBm | -96.3dBm |
| LTE-TDD B41 (10MHz) | -97.5dBm | -99.0dBm | -101.0dBm | -94.3dBm |
| LTE-FDD B1 (10MHz) | -98.5dBm | -99.0dBm | -101.7dBm | -96.3dBm |
| LTE-FDD B3 (10MHz) | -98.5dBm | -99.5dBm | -102.2dBm | -93.3dBm |
| LTE-FDD B5 (10MHz) | -98.7dBm | -100.2dBm | -102.7dBm | -94.3dBm |
| LTE-FDD B8 (10MHz) | -98.5dBm | -100.0dBm | -102.5dBm | -93.3dBm |
| WCDMA B1 | -109.5dBm | \ | \ | -106.7dBm |
| WCDMA B8 | -110.0dBm | \ | \ | -103.7dBm |
| CDMA BC0 | -109.0dBm | \ | \ | -104.0dBm |

Table 35: Conducted RF Receiving Sensitivity of EM05-E

| Frequency | Primary | Diversity | SIMO | 3GPP (SIMO) |
|---------------------|-----------|-----------|-----------|-------------|
| LTE-TDD B38 (10MHz) | -98.2dBm | -97.9dBm | -101.2dBm | -96.3dBm |
| LTE-TDD B41 (10MHz) | -98.2dBm | -97.4dBm | -101.0dBm | -94.3dBm |
| LTE-FDD B1 (10MHz) | -97.7dBm | -98.8dBm | -101.7dBm | -96.3dBm |
| LTE-FDD B3 (10MHz) | -97.7dBm | -99.1dBm | -102.2dBm | -93.3dBm |
| LTE-FDD B7 (10MHz) | -95.7dBm | -97.8dBm | -100.7dBm | -94.3dBm |
| LTE-FDD B8 (10MHz) | -98.4dBm | -99.8dBm | -102.3dBm | -93.3dBm |
| LTE-FDD B20 (10MHz) | -98.0dBm | -99.8dBm | -102.2dBm | -93.3dBm |
| LTE-FDD B28 (10MHz) | -98.1dBm | -99.6dBm | -102.4dBm | -94.8dBm |
| WCDMA B1 | -109.5dBm | \ | \ | -106.7dBm |
| WCDMA B8 | -110.0dBm | \ | \ | -103.7dBm |

6.8. Electrostatics Discharge

The following table shows the ESD characteristics of EM05.

Table 36: ESD Characteristics of EM05

| Tested Interfaces | Contact Discharge | Air Discharge | Unit |
|----------------------|-------------------|---------------|------|
| Power Supply and GND | +/-4 | +/-10 | kV |
| Antenna Interface | +/-4 | +/-8 | kV |
| Others | +/-0.5 | +/-1 | kV |

NOTE

For a good ESD performance, the module mounting holes must be used to attach the device to the main PCB ground closely.

6.9. Thermal Consideration

EM05 is designed to work over an extended temperature range. In order to achieve a maximum performance while working under extended temperatures or extreme conditions (such as with maximum power or data rate, etc.) for a long time, it is strongly recommended to add a heat sink (a thermal compound or pad must be used between the module and the metal heat sink) between the module and the main PCB for thermal dissipation.

Please add ground vias as many as possible on PCB for better heat dissipation. It is NOT recommended to apply solder mask on the main PCB below the thermal dissipation area of EM05, and the module should be kept away from heating sources.

The thermal dissipation area is shown as below. The dimensions are measured in mm.

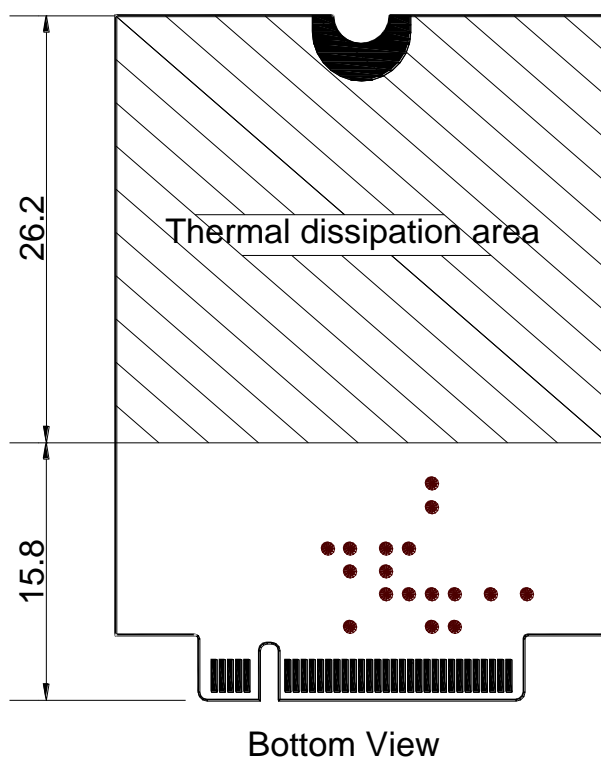


Figure 31: Thermal Dissipation Area on Bottom Side of the Module

The table below shows the heat dissipation performance after adding a heat sink between the module and the main PCB.

Table 37: Heat Dissipation Performance

| Scenario | Testing Time | Temperature | | |
|-----------------|--------------|-------------|-----|------|
| | | Baseband | PA | Unit |
| No heat sink | 15 minutes | 112 | 112 | °C |
| Add a heat sink | 15 minutes | 90 | 89 | °C |

NOTE

The test conditions: LTE Band 8, BW=1.4M and with max transmitting power in ambient temperature 70°C.

7 Mechanical Dimensions and Packaging

This chapter mainly describes mechanical dimensions and packaging specifications of EM05 module. All dimensions are measured in millimeter (mm), and the dimensional tolerances are $\pm 0.05\text{mm}$ unless otherwise specified.

7.1. Mechanical Dimensions of the Module

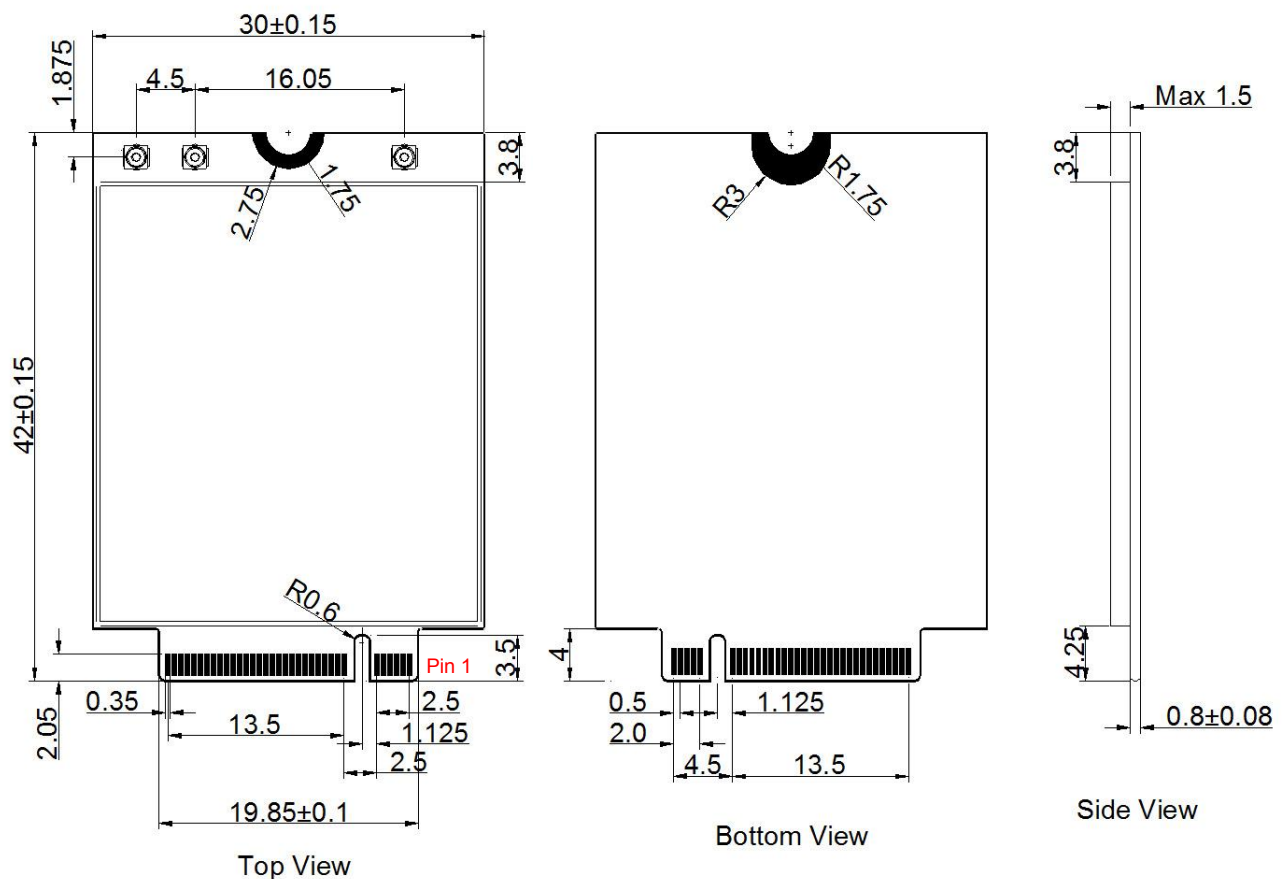


Figure 32: Mechanical Dimensions of EM05

7.2. Standard Dimensions of M.2 PCI Express

The following figure shows the standard dimensions of M.2 PCI Express. Please refer to **document [1]** for details.

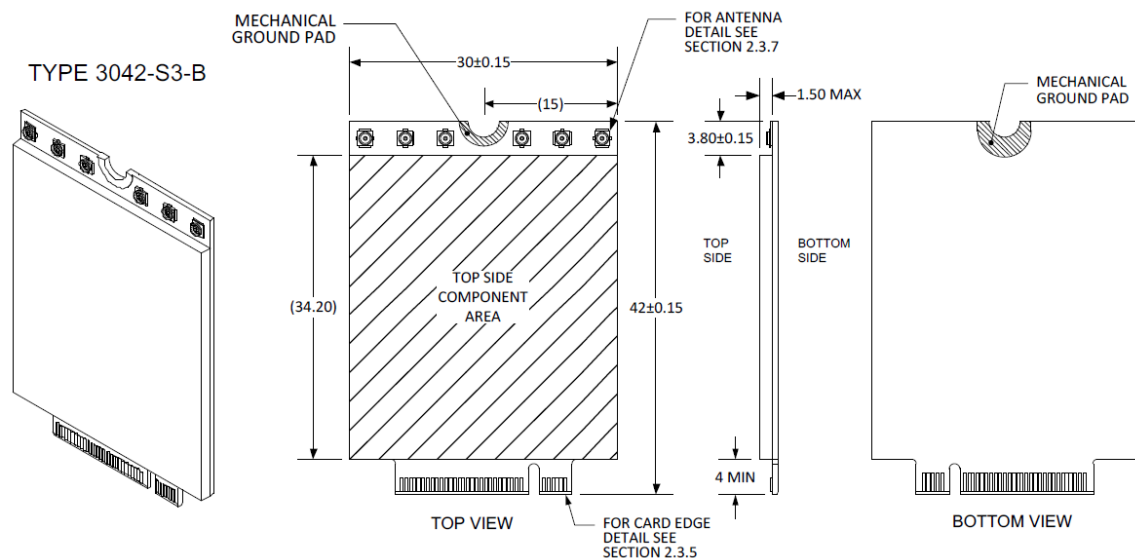


Figure 33: Standard Dimensions of M.2 Type 3042-S3

According to M.2 nomenclature, EM05 is Type 3042-S3-B (30.0mm × 42.0mm, max component height on the top is 1.5mm and single-sided, key ID is B).

Type XX XX-XX-X-X⁰

| Width (mm) | Length (mm) | Label** | Component Max Ht (mm) | |
|------------|-------------|---------|-----------------------|------------|
| | | | Top Max | Bottom Max |
| 12 | 16 | S1 | 1.2 | 0**** |
| 16 | 26 | S2 | 1.35 | 0**** |
| 22 | 30 | S3 | 1.5 | 0**** |
| 30 | 42 | D1 | 1.2 | 1.35 |
| | 60 | D2 | 1.35 | 1.35 |
| | 80 | D3 | 1.5 | 1.35 |
| | 110 | D4 | 1.5 | 0.7 |
| | | D5 | 1.5 | 1.5 |

| Key ID | Pin | Interface |
|--------|-------|--|
| A | 8-15 | 2x PCIe x1 / USB 2.0 / I2C / DP x4 |
| B | 12-19 | PCIe x2/SATA/USB 2.0/USB 3.0/HSIC/SSIC/Audio/UIM/I2C |
| C | 16-23 | Reserved for Future Use |
| D | 20-27 | Reserved for Future Use |
| E | 24-31 | 2x PCIe x1 / USB 2.0 / I2C / SDIO / UART / PCM |
| F | 28-35 | Future Memory Interface (FMI) |
| G | 39-46 | Generic (Not used for M.2)*** |
| H | 43-50 | Reserved for Future Use |
| J | 47-54 | Reserved for Future Use |
| K | 51-58 | Reserved for Future Use |
| L | 55-62 | Reserved for Future Use |
| M | 59-66 | PCIe x4 / SATA |

- * Use ONLY when a double slot is being specified
- ** Label included in height dimension
- *** Key G is intended for custom use. Devices with this key will not be M.2-compliant. Use at your own risk!
- **** Insulating label allowed on connector-based designs

Figure 34: M.2 Nomenclature

7.3. Design Effect Drawings of the Module



Figure 35: Top View of the Module

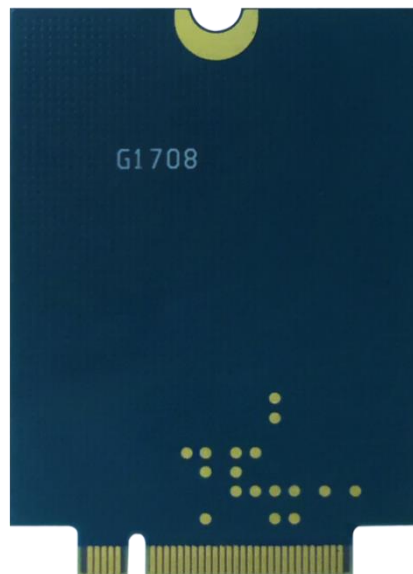


Figure 36: Bottom View of the Module

NOTE

These are design effect drawings of EM05 module. For more accurate pictures, please refer to the module that you get from Quectel.

7.4. M.2 Connector

EM05 adopts a standard PCI Express M.2 connector which compiles with the directives and standards listed in **document [1]**.

7.5. Packaging

EM05 is packaged in tray. Each tray contains 10 modules, and the smallest package contains 100pcs of modules.

8 Appendix References

Table 38: Related Documents

| SN | Document Name | Remark |
|-----|--|--|
| [1] | PCI Express M.2 Specification | PCI Express Specification |
| [2] | Quectel_LTE_Standard_AT_Commands_Manual | AT Commands Manual for LTE Standard Modules |
| [3] | Quectel_LTE_Standard_GNSS_Application_Note | GNSS Application Note for LTE Standard Modules |

Table 39: Terms and Abbreviations

| Abbreviation | Description |
|--------------|---|
| bps | Bits Per Second |
| CDMA | Code Division Multiple Access |
| DFOTA | Delta Firmware Upgrade Over-The-Air |
| DL | Downlink |
| ESD | Electrostatic Discharge |
| FDD | Frequency Division Duplexing |
| GLONASS | GLObalnaya Navigatsionnaya Sputnikovaya Sistema, the Russian Global Navigation Satellite System |
| GNSS | Global Navigation Satellite System |
| GPS | Global Positioning System |
| GSM | Global System for Mobile Communications |
| HR | Half Rate |
| HSDPA | High Speed Downlink Packet Access |

| | |
|--------|---|
| HSPA | High Speed Packet Access |
| HSUPA | High Speed Uplink Packet Access |
| kbps | Kilo Bits Per Second |
| LED | Light Emitting Diode |
| LTE | Long Term Evolution |
| Mbps | Million Bits Per Second |
| ME | Mobile Equipment (Module) |
| MIMO | Multiple-Input Multiple-Output |
| MLCC | Multiplayer Ceramic Chip Capacitor |
| MMS | Multimedia Messaging Service |
| MO | Mobile Originated |
| MT | Mobile Terminated |
| PDU | Protocol Data Unit |
| PPP | Point-to-Point Protocol |
| RF | Radio Frequency |
| Rx | Receive |
| SAR | Specific Absorption Rate |
| SMS | Short Message Service |
| Tx | Transmit |
| UART | Universal Asynchronous Receiver & Transmitter |
| UL | Uplink |
| URC | Unsolicited Result Code |
| (U)SIM | (Universal) Subscriber Identification Module |
| WCDMA | Wideband Code Division Multiple Access |